

Anti-MATH5 Polyclonal Antibody

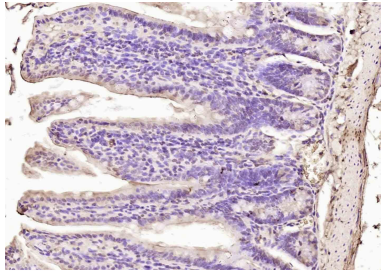
Product Details

Ig Type:	IgG
Reactivity:	Mouse (predicted:Human,Rat,Chicken,Dog,Cow,Horse,Rabbit,Sheep)
Molecular Weight:	Theoretical: 17 kDa.
Purification:	Protein A purified

Applications

Verified Activity:

Paraformaldehyde-fixed, paraffin embedded (mouse intestine); Antigen retrieval by boiling in sodium citrate buffer (pH6.0) for 15 min; Block endogenous peroxidase by 3% hydrogen peroxide for 20 min; Blocking buffer (normal goat serum) at 37°C for 30 min; Antibody incubation with (MATH5) Polyclonal Antibody, Unconjugated (TMAB-01106) at 1:200 overnight at 4°C, followed by operating according to SP Kit (Rabbit) instructions and DAB staining.



Application:	IF,IHC-Fr,IHC-P
Recommended	IHC-P: 1:100-500; IHC-Fr: 1:100-500; IF: 1:100-500

Properties

Stability & Storage:	Store at -20°C or -80°C for 12 months. Avoid repeated freeze-thaw cycles.
Shipping:	Shipping with blue ice.

Antigen Details

Immunogen:	KLH conjugated synthetic peptide: human MAT2A
Antigen Species:	Human
Gene ID:	220202
Uniprot ID:	Q8N100
Synonyms:	ATOH7;Class A basic helix-loop-helix protein 13;Protein atonal homolog 7;hATH5;Helix-loop-helix protein hATH-5;Atonal homolog 7(Drosophila);bHLHa13;Atonal Homolog 7
Biology Area:	HLH

Research Background

This intronless gene encodes a member of the basic helix-loop-helix family of transcription factors, with similarity to Drosophila atonal gene that controls photoreceptor development. Studies in mice suggest that this gene plays a central role in retinal ganglion cell and optic nerve formation. Mutations in this gene are associated with nonsyndromic congenital retinal nonattachment. [provided by RefSeq, Dec 2011]

Inhibitor · Natural Compounds · Compound Libraries · Recombinant Proteins

This product is for Research Use Only · Not for Human or Veterinary or Therapeutic Use

Tel:781-999-4286 E_mail:info@targetmol.com Address:34 Washington Street,Wellesley Hills,MA 02481