

Anti-MAPK14 Polyclonal Antibody 2

Product Details

Ig Type:	IgG
Reactivity:	Human,Mouse,Rat
Molecular Weight:	Theoretical: 41 kDa.
Purification:	Protein A purified

Applications

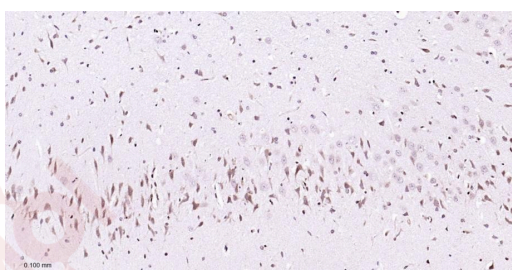
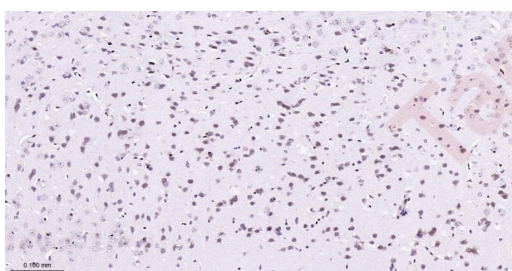
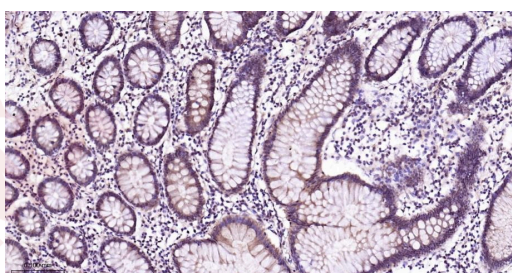
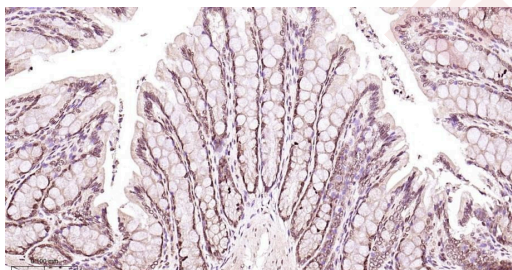
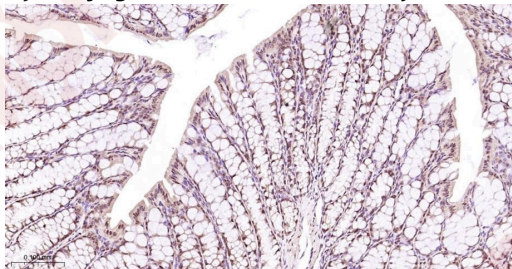
Verified Activity:

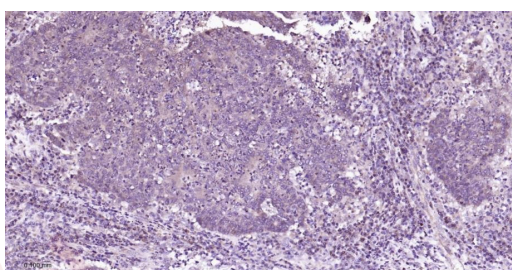
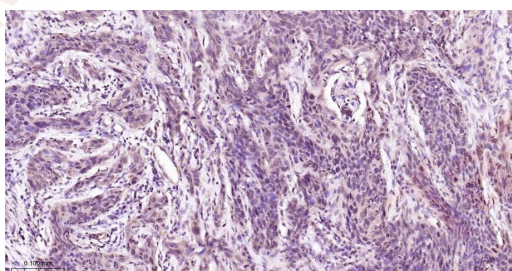
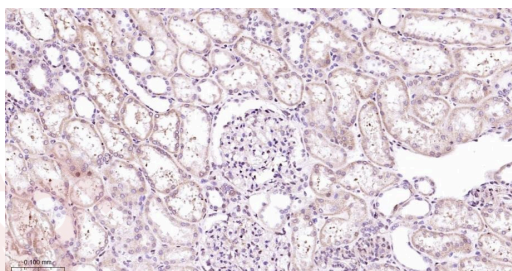
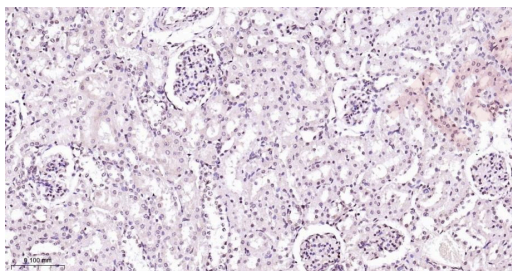
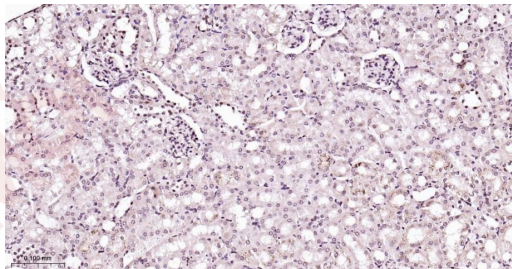
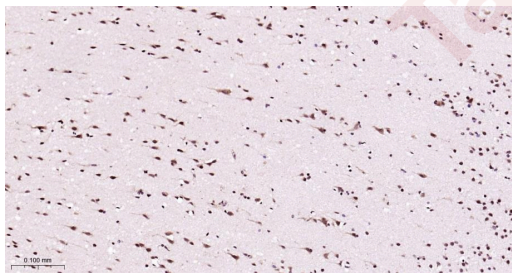
1. Paraformaldehyde-fixed, paraffin embedded Mouse Colon; Antigen retrieval by boiling in sodium citrate buffer (pH6.0) for 15 min; Antibody incubation with P38 MAPK/ MAPK14 Polyclonal Antibody, Unconjugated (TMAB-01103) at 1:200 overnight at 4°C, followed by conjugation to the secondary antibody and DAB staining.
2. Paraformaldehyde-fixed, paraffin embedded Rat Colon; Antigen retrieval by boiling in sodium citrate buffer (pH6.0) for 15 min; Antibody incubation with P38 MAPK/ MAPK14 Polyclonal Antibody, Unconjugated (TMAB-01103) at 1:200 overnight at 4°C, followed by conjugation to the secondary antibody and DAB staining.
3. Paraformaldehyde-fixed, paraffin embedded Human Colon; Antigen retrieval by boiling in sodium citrate buffer (pH6.0) for 15 min; Antibody incubation with P38 MAPK/ MAPK14 Polyclonal Antibody, Unconjugated (TMAB-01103) at 1:200 overnight at 4°C, followed by conjugation to the secondary antibody and DAB staining.
4. Paraformaldehyde-fixed, paraffin embedded Mouse Cerebrum; Antigen retrieval by boiling in sodium citrate buffer (pH6.0) for 15 min; Antibody incubation with P38 MAPK/ MAPK14 Polyclonal Antibody, Unconjugated (TMAB-01103) at 1:200 overnight at 4°C, followed by conjugation to the secondary antibody and DAB staining.
5. Paraformaldehyde-fixed, paraffin embedded Rat Cerebrum; Antigen retrieval by boiling in sodium citrate buffer (pH6.0) for 15 min; Antibody incubation with P38 MAPK/ MAPK14 Polyclonal Antibody, Unconjugated (TMAB-01103) at 1:200 overnight at 4°C, followed by conjugation to the secondary antibody and DAB staining.
6. Paraformaldehyde-fixed, paraffin embedded Human Cerebrum; Antigen retrieval by boiling in sodium citrate buffer (pH6.0) for 15 min; Antibody incubation with P38 MAPK/ MAPK14 Polyclonal Antibody, Unconjugated (TMAB-01103) at 1:200 overnight at 4°C, followed by conjugation to the secondary antibody and DAB staining.
7. Paraformaldehyde-fixed, paraffin embedded Mouse Kidney; Antigen retrieval by boiling in sodium citrate buffer (pH6.0) for 15 min; Antibody incubation with P38 MAPK/ MAPK14 Polyclonal Antibody, Unconjugated (TMAB-01103) at 1:200 overnight at 4°C, followed by conjugation to the secondary antibody and DAB staining.
8. Paraformaldehyde-fixed, paraffin embedded Rat Kidney; Antigen retrieval by boiling in sodium citrate buffer (pH6.0) for 15 min; Antibody incubation with P38 MAPK/ MAPK14 Polyclonal Antibody, Unconjugated (TMAB-01103) at 1:200 overnight at 4°C, followed by conjugation to the secondary antibody and DAB staining.
9. Paraformaldehyde-fixed, paraffin embedded Human Kidney; Antigen retrieval by boiling in sodium citrate buffer (pH6.0) for 15 min; Antibody incubation with P38 MAPK/ MAPK14 Polyclonal Antibody, Unconjugated (TMAB-01103) at 1:200 overnight at 4°C, followed by conjugation to the secondary antibody and DAB staining.
10. Paraformaldehyde-fixed, paraffin embedded Human Cervical Cancer; Antigen retrieval by boiling in sodium citrate buffer (pH6.0) for 15 min; Antibody incubation with P38 MAPK/

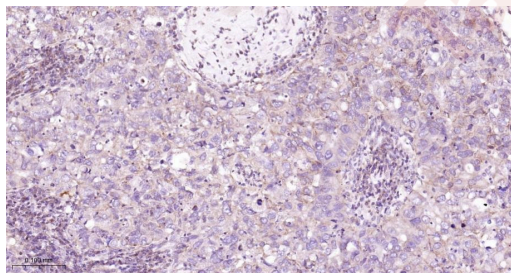
MAPK14 Polyclonal Antibody, Unconjugated (TMAB-01103) at 1:200 overnight at 4°C, followed by conjugation to the secondary antibody and DAB staining.

11. Paraformaldehyde-fixed, paraffin embedded Human Colon Cancer; Antigen retrieval by boiling in sodium citrate buffer (pH6.0) for 15 min; Antibody incubation with P38 MAPK/ MAPK14 Polyclonal Antibody, Unconjugated (TMAB-01103) at 1:200 overnight at 4°C, followed by conjugation to the secondary antibody and DAB staining.

12. Paraformaldehyde-fixed, paraffin embedded Human Breast Cancer; Antigen retrieval by boiling in sodium citrate buffer (pH6.0) for 15 min; Antibody incubation with P38 MAPK/ MAPK14 Polyclonal Antibody, Unconjugated (TMAB-01103) at 1:200 overnight at 4°C, followed by conjugation to the secondary antibody and DAB staining.







Application: IF,IHC-Fr,IHC-P

Recommended IHC-P: 1:100-500; IHC-Fr: 1:100-500; IF: 1:100-500

Properties

Stability & Storage: Store at -20°C or -80°C for 12 months. Avoid repeated freeze-thaw cycles.

Shipping: Shipping with blue ice.

Antigen Details

Immunogen: KLH conjugated synthetic peptide: human P38 MAPK/ MAPK14

Antigen Species: Human

Gene ID: 1432

Uniprot ID: Q16539

Synonyms: MAPK 14;MXI2;MAP kinase p38 alpha;CSBP1;Cytokine suppressive anti-inflammatory drug-binding protein;Stress-activated protein kinase 2a;Mitogen-activated protein kinase p38 alpha;CSAID-binding protein;EC 2.7.11.24;MAX-interacting protein 2;MAP kinase 14;P38 MAPK;SAPK2A;MAP kinase MXI2;Mitogen-activated protein kinase 14;CSBP;CSBP2

Biology Area: MAPK pathway,TLR Signaling,Other Cell Signaling Kits,MAPK Pathway

Research Background

The protein encoded by this gene is a member of the MAP kinase family. MAP kinases act as an integration point for multiple biochemical signals, and are involved in a wide variety of cellular processes such as proliferation, differentiation, transcription regulation and development. This kinase is activated by various environmental stresses and proinflammatory cytokines. The activation requires its phosphorylation by MAP kinase kinases(MKKs), or its autophosphorylation triggered by the interaction of MAP3K7IP1/TAB1 protein with this kinase. The substrates of this kinase include transcription regulator ATF2, MEF2C, and MAX, cell cycle regulator CDC25B, and tumor suppressor p53, which suggest the roles of this kinase in stress related transcription and cell cycle regulation, as well as in genotoxic stress response. Four alternatively spliced transcript variants of this gene encoding distinct isoforms have been reported.

Inhibitor · Natural Compounds · Compound Libraries · Recombinant Proteins

This product is for Research Use Only · Not for Human or Veterinary or Therapeutic Use

Tel:781-999-4286 E_mail:info@targetmol.com Address:34 Washington Street,Wellesley Hills,MA 02481
