

Anti-MAP1LC3A Polyclonal Antibody

Product Details

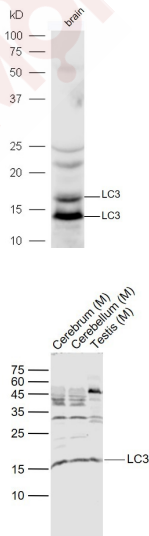
Ig Type:	IgG
Reactivity:	Mouse (predicted:Human,Rat,Pig,Cow,Horse)
Molecular Weight:	Theoretical: 14/16 kDa. Actual: 16 kDa.
Purification:	Protein A purified

Applications

1. Protein: mouse brain lysates at 40 µg;
Primary: rabbit Anti-LC3 (TMAB-01097) at 1:300;
Secondary: HRP conjugated Goat-Anti-rabbit IgG (secondary antibody) at 1: 5000;
Predicted band size:14 kDa
Observed band size:14,16 kDa

2. Sample:

Verified Activity: Lane 1: Cerebrum (Mouse) Lysate at 40 µg
Lane 2: Cerebellum (Mouse) Lysate at 40 µg
Lane 3: Testis (Mouse) Lysate at 40 µg
Primary: Anti-LC3 (TMAB-01097) at 1/1000 dilution
Secondary: IRDye800CW Goat Anti-Rabbit IgG at 1/20000 dilution
Predicted band size: 17/14 kDa
Observed band size: 17 kDa



Application:	WB
Recommended	WB: 1:500-2000

Properties

Stability & Storage: Store at -20°C or -80°C for 12 months. Avoid repeated freeze-thaw cycles.

Shipping: Shipping with blue ice.

Antigen Details

Immunogen: KLH conjugated synthetic peptide: human LC3

Antigen Species: Human

Gene ID: 84557

Uniprot ID: Q9H492

Synonyms: LC3A;MAP1ALC3;MAP1BLC3;microtubule-associated protein 1 light chain 3 α ;ATG8E;LC3;
microtubule-associated protein 1 light chain 3 alpha

Inhibitor · Natural Compounds · Compound Libraries · Recombinant Proteins

This product is for Research Use Only · Not for Human or Veterinary or Therapeutic Use

Tel:781-999-4286 E_mail:info@targetmol.com Address:34 Washington Street,Wellesley Hills,MA 02481