

Anti-MAL2 Polyclonal Antibody

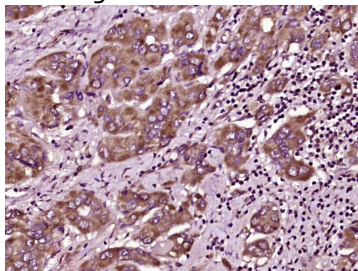
Product Details

Ig Type:	IgG
Reactivity:	Human (predicted:Mouse,Rat,Pig,Cow)
Molecular Weight:	Theoretical: 19 kDa.
Purification:	Protein A purified

Applications

Verified Activity:

Paraformaldehyde-fixed, paraffin embedded (human liver carcinoma); Antigen retrieval by boiling in sodium citrate buffer (pH6.0) for 15 min; Block endogenous peroxidase by 3% hydrogen peroxide for 20 min; Blocking buffer (normal goat serum) at 37°C for 30 min; Antibody incubation with (MAL2) Polyclonal Antibody, Unconjugated (TMAB-01096) at 1:400 overnight at 4°C, followed by operating according to SP Kit (Rabbit) instructions and DAB staining.



Application:	IF,IHC-Fr,IHC-P
Recommended	IHC-P: 1:100-500; IHC-Fr: 1:100-500; IF: 1:100-500

Properties

Stability & Storage:	Store at -20°C or -80°C for 12 months. Avoid repeated freeze-thaw cycles.
Shipping:	Shipping with blue ice.

Antigen Details

Immunogen:	KLH conjugated synthetic peptide: human MAL2
Antigen Species:	Human
Gene ID:	114569
Uniprot ID:	Q969L2
Synonyms:	Mal, T cell differentiation protein 2;MAL proteolipid protein 2;MAL 2
Biology Area:	Lipid metabolism,Regulation

Research Background

The MARVEL domain is a 130 amino acid motif that contains four transmembrane helices, both of which have cytoplasmic N- and C-terminal regions. MARVEL domain-containing proteins are thought to participate in tight junction regulation, the biogenesis of vesicular transport carriers and in cholesterol-rich membrane apposition

A DRUG SCREENING EXPERT

events. MAL2 (mal, T-cell differentiation protein 2) is a 176 amino acid multi-pass membrane protein that is associated with lipid rafts and contains one MARVEL domain. Expressed predominately in liver, kidney and lung, MAL2 functions as a member of the polarized machinery transport system and is required for transcytosis, a transporter pathway used to deliver membrane-bound cargo from perinuclear endosomes to the apical surface in a raft-dependent manner. Differential expression of MAL2 is associated with several cancers, including renal cell carcinoma and childhood leukemia, suggesting a role for MAL2 in tumorigenesis.

Inhibitor · Natural Compounds · Compound Libraries · Recombinant Proteins

This product is for Research Use Only· Not for Human or Veterinary or Therapeutic Use

Tel:781-999-4286 E_mail:info@targetmol.com Address:34 Washington Street,Wellesley Hills,MA 02481