

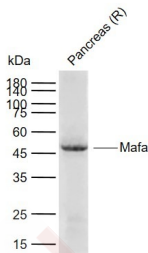
Anti-Mafa Polyclonal Antibody

Product Details

Ig Type: IgG
 Reactivity: Rat (predicted:Human,Mouse)
 Molecular Weight: Theoretical: 37 kDa. Actual: 47 kDa.
 Purification: Protein A purified

Applications

Sample:
 Lane 1: Rat Pancreas tissue lysates
 Verified Activity:
 Primary: Anti-Mafa (TMAB-01095) at 1/1000 dilution
 Secondary: IRDye800CW Goat Anti-Rabbit IgG at 1/20000 dilution
 Predicted band size: 37 kDa
 Observed band size: 47 kDa



Application: IF,IHC-Fr,WB
 Recommended WB: 1:500-2000; IHC-Fr: 1:100-500; IF: 1:100-500

Properties

Stability & Storage: Store at -20°C or -80°C for 12 months. Avoid repeated freeze-thaw cycles.
 Shipping: Shipping with blue ice.

Antigen Details

Immunogen: KLH conjugated synthetic peptide: mouse Mafa
 Antigen Species: Mouse
 Gene ID: 378435
 Uniprot ID: Q8CF90
 Synonyms: Pancreatic beta-cell-specific transcriptional activator;Mafa homolog;V-maf musculoaponeurotic fibrosarcoma oncogene homolog A;(avian) V-maf musculoaponeurotic fibrosarcoma oncogene homolog A
 Biology Area: Co-factors,Other factors,Insulin / Insulin-like

Research Background

Insulin gene expression is regulated by several islet-enriched transcription factors. However, MAFA is the only beta cell-specific activator. MAFA selectively induces endogenous insulin transcription in non-beta cells. MAFA was also

A DRUG SCREENING EXPERT

first detected in the insulin-producing cells formed during the second and predominant phase of beta cell differentiation, and absent in the few insulin-positive cells found in Nkx6.1(-/-) pancreata, which lack the majority of second-phase beta cells. These results demonstrate that MAFA is a potent insulin activator that is likely to function downstream of Nkx6.1 during islet insulin-producing cell development.

Inhibitor · Natural Compounds · Compound Libraries · Recombinant Proteins

This product is for Research Use Only · Not for Human or Veterinary or Therapeutic Use

Tel:781-999-4286 E_mail:info@targetmol.com Address:34 Washington Street,Wellesley Hills,MA 02481