

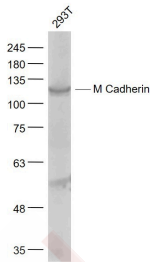
Anti-M Cadherin Polyclonal Antibody

Product Details

Ig Type: IgG
 Reactivity: Human (predicted:Mouse,Rat,Dog,Cow)
 Molecular Weight: Theoretical: 89 kDa. Actual: 110 kDa.
 Purification: Protein A purified

Applications

Sample: 293t (Human) Cell Lysate at 30 µg
 Verified Activity: Primary: Anti-M Cadherin (TMAB-01094) at 1/1000 dilution
 Secondary: IRDye800CW Goat Anti-Rabbit IgG at 1/20000 dilution
 Predicted band size: 89 kDa
 Observed band size: 110 kDa



Application: WB
 Recommended WB: 1:500-2000

Properties

Stability & Storage: Store at -20°C or -80°C for 12 months. Avoid repeated freeze-thaw cycles.
 Shipping: Shipping with blue ice.

Antigen Details

Immunogen: KLH conjugated synthetic peptide: human M-Cadherin
 Antigen Species: Human
 Gene ID: 1013
 Uniprot ID: P55291
 Synonyms: Cadherin15;CDHM;Cadherin3;M-Cadherin;Muscle cadherin;Cadherin 14;CCAD;CDH 3;CDH 15; Cadherin 3;MCAD;Myotubule cadherin;CDH3;Cadherin14;Cadherin 15;CAD15;CDH15;CDH14; CDH 14
 Biology Area: Cell differentiation,Membrane Proteins,Cadherins,Calcium Binding Proteins

Research Background

Cadherins are a family of transmembrane glycoproteins that play a key role in Calcium dependent cell-cell adhesion. Several members of the cadherin family have been identified so far, including E- (epithelial), P-

(placental), N- (neuronal) and M- (muscle) cadherin.

Cadherins consist of an extracellular domain containing 5 cadherin domains, a transmembrane region, and a conserved cytoplasmic domain. Transcripts from this particular cadherin are expressed in myoblasts and upregulated in myotubule-forming cells. M-Cadherin is thought to be essential for the control of morphogenetic processes, specifically myogenesis, and may provide a trigger for terminal muscle cell differentiation.

Inhibitor · Natural Compounds · Compound Libraries · Recombinant Proteins

This product is for Research Use Only · Not for Human or Veterinary or Therapeutic Use

Tel:781-999-4286 E_mail:info@targetmol.com Address:34 Washington Street,Wellesley Hills,MA 02481