

Anti-Lysozyme C Polyclonal Antibody

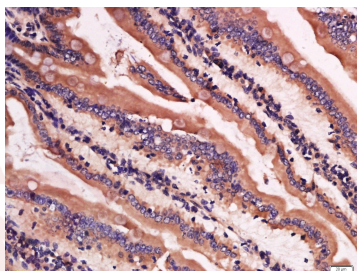
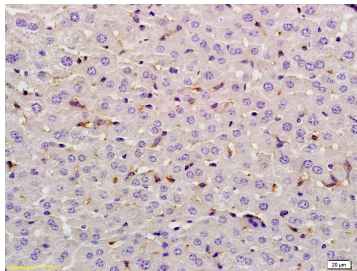
Product Details

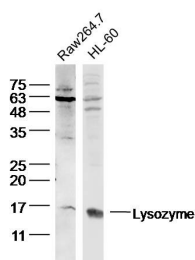
Ig Type:	IgG
Reactivity:	Mouse,Rat (predicted:Chicken)
Molecular Weight:	Theoretical: 17 kDa. Actual: 16 kDa.
Purification:	Protein A purified

Applications

1. Tissue/cell: rat liver tissue; 4% Paraformaldehyde-fixed and paraffin-embedded; Antigen retrieval: citrate buffer (0.01M, pH6.0), Boiling bathing for 15 min; Block endogenous peroxidase by 3% Hydrogen peroxide for 30 min; Blocking buffer (normal goat serum) at 37°C for 20 min; Incubation: Anti-Lysozyme Polyclonal Antibody, Unconjugated (TMAB-01091) 1:200, overnight at 4°C, followed by conjugation to the secondary antibody and DAb staining.
2. Tissue/cell: mouse intestine tissue; 4% Paraformaldehyde-fixed and paraffin-embedded; Antigen retrieval: citrate buffer (0.01M, pH6.0), Boiling bathing for 15 min; Block endogenous peroxidase by 3% Hydrogen peroxide for 30 min; Blocking buffer (normal goat serum) at 37°C for 20 min; Incubation: Anti-Lysozyme Polyclonal Antibody, Unconjugated (TMAB-01091) 1:200, overnight at 4°C, followed by conjugation to the secondary antibody and DAb staining.
3. Sample:
Raw264.7 Cell (Mouse) Lysate at 40 µg
HL-60 Cell (Human) lysate at 40 µg
Primary: Anti-Lysozyme (TMAB-01091) at 1/300 dilution
Secondary: IRDye800CW Goat Anti-Rabbit IgG at 1/20000 dilution
Predicted band size: 17 kDa
Observed band size: 16 kDa

Verified Activity:





Application: IF,IHC-Fr,IHC-P,WB

Recommended WB: 1:500-2000; IHC-P: 1:100-500; IHC-Fr: 1:100-500; IF: 1:100-500

Properties

Stability & Storage: Store at -20°C or -80°C for 12 months. Avoid repeated freeze-thaw cycles.

Shipping: Shipping with blue ice.

Antigen Details

Immunogen: Full length native Lysozyme

Synonyms: lysosyme;Lyz;EC 3.2.1.17;14 β N acetylmuramidase;14 beta N acetylmuramidase;14 beta N acetylmuramidase C;LZM;1 4 beta n acetylmuramidase c;Lysozyme C;Lysozyme C precursor; Muramidase

Biology Area: Lysosome,Macrophage / Inflamm.,Cytotoxic Cells,Blood

Research Background

This gene encodes human lysozyme, whose natural substrate is the bacterial cell wall peptidoglycan (cleaving the beta[1-4]glycosidic linkages between N-acetylmuramic acid and N-acetylglucosamine). Lysozyme is one of the antimicrobial agents found in human milk, and is also present in spleen, lung, kidney, white blood cells, plasma, saliva, and tears. The protein has antibacterial activity against a number of bacterial species. Missense mutations in this gene have been identified in heritable renal amyloidosis. [provided by RefSeq, Oct 2014]

Inhibitor · Natural Compounds · Compound Libraries · Recombinant Proteins

This product is for Research Use Only · Not for Human or Veterinary or Therapeutic Use

Tel:781-999-4286 E_mail:info@targetmol.com Address:34 Washington Street,Wellesley Hills,MA 02481