

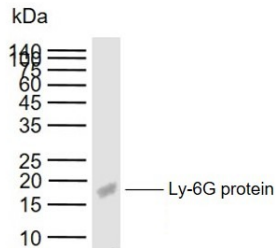
Anti-LY6G Polyclonal Antibody

Product Details

Ig Type:	IgG
Reactivity:	Mouse
Molecular Weight:	Theoretical: 14 kDa. Actual: 18 kDa.
Purification:	Protein A purified

Applications

Verified Activity:	Lane 1: Recombinant mouse Ly-6G protein (His-tag)
	Primary: Anti-Ly-6G (TMAB-01089) at 1/1000 dilution
	Secondary: IRDye800CW Goat Anti-Rabbit IgG at 1/20000 dilution
	Predicted band size: 14 kDa Observed band size: 18 kDa



Application:	WB
Recommended	WB: 1:500-2000

Properties

Stability & Storage:	Store at -20°C or -80°C for 12 months. Avoid repeated freeze-thaw cycles.
Shipping:	Shipping with blue ice.

Antigen Details

Immunogen:	KLH conjugated synthetic peptide: mouse Ly-6G/Gr-1
Antigen Species:	Mouse
Gene ID:	546644
Uniprot ID:	P35461
Synonyms:	Lymphocyte antigen 6G;Ly-6G;Ly6g;Ly-6G.1
Biology Area:	Monocytic Lineage,Neutrophil Lineage,Surface Molecules,Other Cell Types

Research Background

Ly6G is a GPI-anchored protein, that is also known as the myeloid differentiation antigen Gr1. The antigen is transiently expressed on monocytes in the bone marrow. The level of antigen expression in the bone marrow directly correlates with granulocyte differentiation and maturation. Ly6G is expressed predominantly on neutrophils, also in a subset of eosinophils, differentiating pre-monocytes, and plasmacytoid dendritic cells.

Inhibitor · Natural Compounds · Compound Libraries · Recombinant Proteins

This product is for Research Use Only · Not for Human or Veterinary or Therapeutic Use

Tel:781-999-4286 E_mail:info@targetmol.com Address:34 Washington Street,Wellesley Hills,MA 02481