

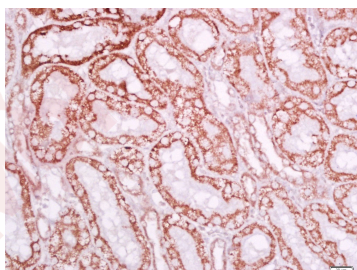
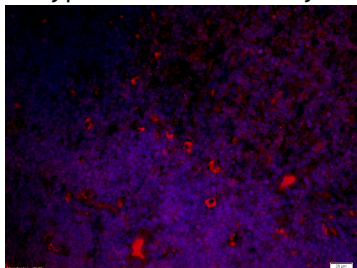
## Anti-LY6A Polyclonal Antibody

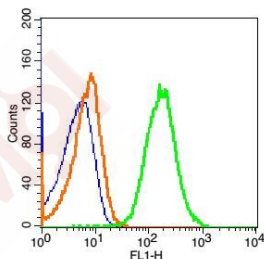
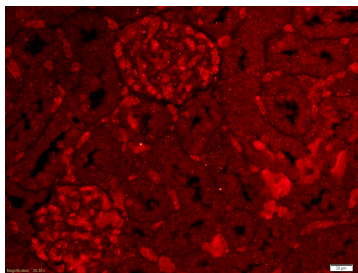
### Product Details

Ig Type:	IgG
Reactivity:	Mouse,Rat
Molecular Weight:	Theoretical: 9 kDa. Actual: 18 kDa.
Purification:	Protein A purified

### Applications

1. Tissue/cell: mouse thymus tissue;4% Paraformaldehyde-fixed and paraffin-embedded; Antigen retrieval: citrate buffer (0.01M, pH6.0), Boiling bathing for 15 min; Blocking buffer (normal goat serum) at 37°C for 20 min; Incubation: Anti-Sca1 Polyclonal Antibody, Unconjugated (TMAB-01088) 1:500, overnight at 4° C; The secondary antibody was Goat Anti-Rabbit IgG, Cy3 conjugated used at 1:200 dilution for 40 minutes at 37°C. DAPI (5 µg/ml,blue) was used to stain the cell nucleus
  2. Tissue/cell: rat kidney tissue; 4% Paraformaldehyde-fixed and paraffin-embedded; Antigen retrieval: citrate buffer (0.01M, pH6.0), Boiling bathing for 15 min; Block endogenous peroxidase by 3% Hydrogen peroxide for 30 min; Blocking buffer (normal goat serum) at 37°C for 20 min;
- Verified Activity: Incubation: Anti-Sca1 Polyclonal Antibody, Unconjugated (TMAB-01088) 1:500, overnight at 4° C, followed by conjugation to the secondary antibody and DAb staining.
3. Tissue/cell: rat kidney tissue;4% Paraformaldehyde-fixed and paraffin-embedded; Antigen retrieval: citrate buffer (0.01M, pH6.0), Boiling bathing for 15 min; Blocking buffer (normal goat serum) at 37°C for 20 min; Incubation: Anti-Sca1 Polyclonal Antibody, Unconjugated (TMAB-01088) 1:500, overnight at 4° C; The secondary antibody was Goat Anti-Rabbit IgG, Cy3 conjugated used at 1:200 dilution for 40 minutes at 37°C.
  4. Blank control: Mouse Thymus Cells (blue). Primary Antibody: Rabbit Anti-Sca1/FITC Conjugated antibody (TMAB-01088/FITC), Dilution: 2 µg in 100 µL 1X PBS containing 0.5% BSA; Isotype Control Antibody: Rabbit IgG/FITC (orange),used under the same conditions.





Application: FCM,IF,IHC-Fr,IHC-P

Recommended IHC-P: 1:100-500; IHC-Fr: 1:100-500; IF: 1:100-500; FCM: 2µg /Test

### Properties

Stability & Storage: Store at -20°C or -80°C for 12 months. Avoid repeated freeze-thaw cycles.

Shipping: Shipping with blue ice.

### Antigen Details

Immunogen: KLH conjugated synthetic peptide: mouse Sca1/Ly6A/E

Antigen Species: Mouse

Gene ID: 110454

Uniprot ID: P05533

Synonyms: TAP;Ly-6A/E;Ly-6A.2;Sca1;lymphocyte antigen 6 complex, locus A;Sca-1;Ly-6E.1

Biology Area: Stem cells,Ectoderm,Hematopoietic system development,HSC markers,Surface Molecules, Ectoderm

### Research Background

Predicted to enable acetylcholine receptor binding activity and acetylcholine receptor inhibitor activity. Acts upstream of or within response to bacterium. Located in external side of plasma membrane. Is expressed in alimentary system; hindlimb tendon; liver; metanephros; and physiological umbilical hernia. Used to study osteoporosis. Orthologous to human LY6H (lymphocyte antigen 6 family member H). [provided by Alliance of Genome Resources, Apr 2022]

**Inhibitor · Natural Compounds · Compound Libraries · Recombinant Proteins**

This product is for Research Use Only· Not for Human or Veterinary or Therapeutic Use

Tel:781-999-4286 E\_mail:info@targetmol.com Address:34 Washington Street,Wellesley Hills,MA 02481