

Anti-LRP1 Polyclonal Antibody

Product Details

Ig Type:	IgG
Reactivity:	Human (predicted:Dog,Pig,Cow,Rabbit,Sheep)
Molecular Weight:	Theoretical: 85/515 kDa. Actual: 85 kDa.
Purification:	Protein A purified

Applications

1. Sample:

Lane 1: A549 (Human) Cell Lysate at 30 µg

Lane 2: HepG2 (Human) Cell Lysate at 30 µg

Lane 3: U2os (Human) Cell Lysate at 30 µg

Primary: Anti-LRP1 (TMAB-01082) at 1/1000 dilution

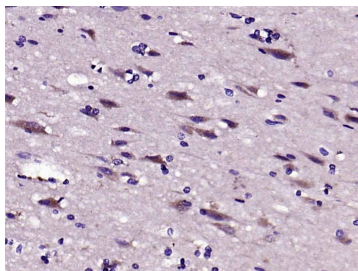
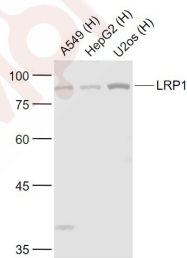
Secondary: IRDye800CW Goat Anti-Rabbit IgG at 1/20000 dilution

Verified Activity:

Predicted band size: 85 kDa

Observed band size: 85 kDa

2. Paraformaldehyde-fixed, paraffin embedded (human brain); Antigen retrieval by boiling in sodium citrate buffer (pH6.0) for 15 min; Block endogenous peroxidase by 3% hydrogen peroxide for 20 min; Blocking buffer (normal goat serum) at 37°C for 30 min; Antibody incubation with (LRP1) Polyclonal Antibody, Unconjugated (TMAB-01082) at 1:200 overnight at 4°C, followed by operating according to SP Kit (Rabbit) instructions and DAB staining.



Application: IF,IHC-Fr,IHC-P,WB

Recommended WB: 1:500-2000; IHC-P: 1:100-500; IHC-Fr: 1:100-500; IF: 1:100-500

Properties

Stability & Storage: Store at -20°C or -80°C for 12 months. Avoid repeated freeze-thaw cycles.

Shipping: Shipping with blue ice.

Antigen Details

Immunogen: KLH conjugated synthetic peptide: human LRP1

Antigen Species: Human

Gene ID: 4035

Uniprot ID: Q07954

Synonyms: LRP;KPA;IGFBP3R1;IGFBP-3R;IGFBP3R;TGFBR5;DDH3;APOER;CD91;LRP1A;A2MR;APR

Biology Area: Metabolism,Phagocytosis,Lipoprotein metabolism,Serum Proteins,Cholesterol Metabolism, Phagocytosis,Cholesterol Metabolism,Lipoprotein metabolism,Apoptosis,Cancer,Heart disease, Neurodegenerative disease,Obesity,Alzheimer's disease,Lipid metabolism

Research Background

This gene encodes a member of the low-density lipoprotein receptor family of proteins. The encoded preproprotein is proteolytically processed by furin to generate 515 kDa and 85 kDa subunits that form the mature receptor (PMID: 8546712). This receptor is involved in several cellular processes, including intracellular signaling, lipid homeostasis, and clearance of apoptotic cells. In addition, the encoded protein is necessary for the alpha 2-macroglobulin-mediated clearance of secreted amyloid precursor protein and beta-amyloid, the main component of amyloid plaques found in Alzheimer patients. Expression of this gene decreases with age and has been found to be lower than controls in brain tissue from Alzheimer's disease patients. [provided by RefSeq, Oct 2015]

Inhibitor · Natural Compounds · Compound Libraries · Recombinant Proteins

This product is for Research Use Only · Not for Human or Veterinary or Therapeutic Use

Tel:781-999-4286 E_mail:info@targetmol.com Address:34 Washington Street,Wellesley Hills,MA 02481