

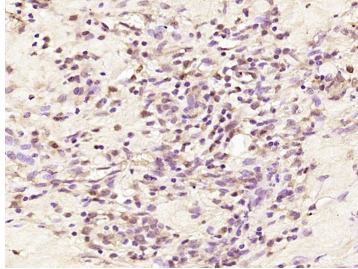
## Anti-LOR/Loricrin Polyclonal Antibody

## Product Details

Ig Type:	IgG
Reactivity:	Human (predicted:Horse)
Molecular Weight:	Theoretical: 26 kDa.
Purification:	Protein A purified

## Applications

Verified Activity: Paraformaldehyde-fixed, paraffin embedded (human skin); Antigen retrieval by boiling in sodium citrate buffer (pH6.0) for 15 min; Block endogenous peroxidase by 3% hydrogen peroxide for 20 min; Blocking buffer (normal goat serum) at 37°C for 30 min; Antibody incubation with (LOR) Polyclonal Antibody, Unconjugated (TMAB-01079) at 1:200 overnight at 4°C, followed by operating according to SP Kit (Rabbit) instructions and DAB staining.



Application:	IF,IHC-Fr,IHC-P
Recommended	IHC-P: 1:100-500; IHC-Fr: 1:100-500; IF: 1:100-500

## Properties

Stability & Storage:	Store at -20°C or -80°C for 12 months. Avoid repeated freeze-thaw cycles.
Shipping:	Shipping with blue ice.

## Antigen Details

Immunogen:	KLH conjugated synthetic peptide: human LOR/Loricrin
Antigen Species:	Human
Gene ID:	4014
Uniprot ID:	P23490
Synonyms:	Loricrin;MGC111513;LRN;LOR;LORI;OTTHUMP00000015823
Biology Area:	Cell differentiation,Cytokeratin,Other Cell Types

## Research Background

This gene encodes loricrin, a major protein component of the cornified cell envelope found in terminally differentiated epidermal cells. Mutations in this gene are associated with Vohwinkel's syndrome and progressive symmetric erythrokeratoderma, both inherited skin diseases. [provided by RefSeq, Jul 2008]

**Inhibitor · Natural Compounds · Compound Libraries · Recombinant Proteins**

This product is for Research Use Only · Not for Human or Veterinary or Therapeutic Use

Tel:781-999-4286 E\_mail:info@targetmol.com Address:34 Washington Street,Wellesley Hills,MA 02481