

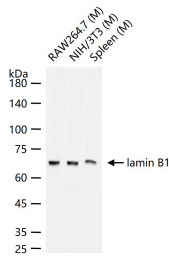
## Anti-LMNB1 Polyclonal Antibody

### Product Details

Ig Type:	IgG
Reactivity:	Mouse
Molecular Weight:	Theoretical: 64 kDa. Actual: 64 kDa.
Purification:	Protein A purified

### Applications

**Verified Activity:** 25 µg total protein per Lane of various lysates probed with lamin B1 polyclonal antibody, unconjugated (TMAB-01077) at 1:1000 dilution and 4°C overnight incubation. Followed by conjugated secondary antibody incubation at RT for 60 min.



Application:	WB
Recommended	WB: 1:500-2000

### Properties

Stability & Storage:	Store at -20°C or -80°C for 12 months. Avoid repeated freeze-thaw cycles.
Shipping:	Shipping with blue ice.

### Antigen Details

Immunogen:	KLH conjugated synthetic peptide: mouse Lamin B
Antigen Species:	Mouse
Gene ID:	16906
Uniprot ID:	P14733
Synonyms:	MCPH26;LMN;Lamin-B1;LMN2;LMNB;ADLD;LMNB 1
Biology Area:	Lamins,Lamins,Lamin B1 - Nuclear,Lamins,Nuclear Envelope

### Research Background

The nuclear lamina consists of a two-dimensional matrix of proteins located next to the inner nuclear membrane. The lamin family of proteins make up the matrix and are highly conserved in evolution. During mitosis, the lamina matrix is reversibly disassembled as the lamin proteins are phosphorylated. Lamin proteins are thought to be involved in nuclear stability, chromatin structure and gene expression. Vertebrate lamins consist of two types, A and B. This gene encodes one of the two B type proteins, B1. Alternative splicing results in transcript variants and a duplication of this gene is associated with autosomal dominant adult-onset leukodystrophy (ADLD). [provided by

**Inhibitor · Natural Compounds · Compound Libraries · Recombinant Proteins**

This product is for Research Use Only · Not for Human or Veterinary or Therapeutic Use

Tel:781-999-4286 E\_mail:info@targetmol.com Address:34 Washington Street,Wellesley Hills,MA 02481