

Anti-Lipoprotein lipase Polyclonal Antibody 2

Product Details

Ig Type:	IgG
Reactivity:	Human,Rat (predicted:Mouse,Dog,Pig,Cow,Horse,Rabbit)
Molecular Weight:	Theoretical: 53 kDa. Actual: 60 kDa.
Purification:	Protein A purified

Applications

1. Paraformaldehyde-fixed, paraffin embedded (rat brain); Antigen retrieval by boiling in sodium citrate buffer (pH6.0) for 15 min; Block endogenous peroxidase by 3% hydrogen peroxide for 20 min; Blocking buffer (normal goat serum) at 37°C for 30 min; Antibody incubation with (Lipoprotein lipase) Polyclonal Antibody, Unconjugated (TMAB-01074) at 1:500 overnight at 4°C, followed by a conjugated secondary for 20 min and DAB staining.
2. Paraformaldehyde-fixed, paraffin embedded (rat brain); Antigen retrieval by boiling in sodium citrate buffer (pH6.0) for 15 min; Block endogenous peroxidase by 3% hydrogen peroxide for 20 min; Blocking buffer (normal goat serum) at 37°C for 30 min; Antibody incubation with (Lipoprotein lipase) Polyclonal Antibody, Unconjugated (TMAB-01074) at 1:500 overnight at 4°C, followed by a conjugated secondary for 20 min and DAB staining.
3. Blank control (blue line): raji (fixed with pre-warmed 4% paraformaldehyde for 30 min at 37°C and then permeabilized with 90% ice-cold methanol for 30 min on ice)

Verified Activity: Primary Antibody (green line): Rabbit Anti-Lipoprotein lipase antibody (TMAB-01074), Dilution: 0.2 µg/10⁶ cells;

Isotype Control Antibody (orange line): Rabbit IgG.

Secondary Antibody (white blue line): Goat anti-rabbit IgG-PE, Dilution: 1 µg/test.

4. Sample:

Lane 1: Human SH-SY5Y cell lysates

Lane 2: Human HeLa cell lysates

Lane 3: Human MCF-7 cell lysates

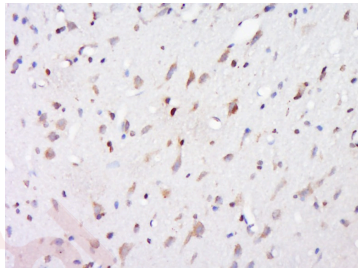
Lane 4: Human HL-60 cell lysates

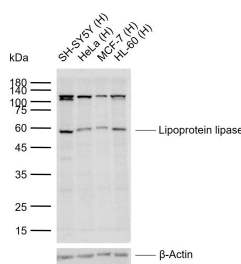
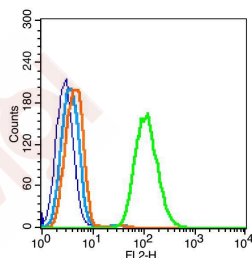
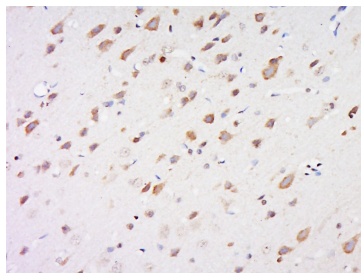
Primary: Anti-Lipoprotein lipase (TMAB-01074) at 1/500 dilution

Secondary: IRDye800CW Goat Anti-Rabbit IgG at 1/20000 dilution

Predicted band size: 53 kDa

Observed band size: 60 kDa





Application: FCM,IF,IHC-Fr,IHC-P,WB

Recommended WB: 1:500-2000; IHC-P: 1:100-500; IHC-Fr: 1:100-500; IF: 1:100-500; FCM: 0.2µg/Test

Properties

Stability & Storage: Store at -20°C or -80°C for 12 months. Avoid repeated freeze-thaw cycles.

Shipping: Shipping with blue ice.

Antigen Details

Immunogen: KLH conjugated synthetic peptide: human LPL protein

Antigen Species: Human

Gene ID: 4023

Uniprot ID: P06858

Synonyms: LIPD;LPL;EC 3.1.1.34;HDLQC11;MGC137861;Lipoprotein lipase;LIPL

Biology Area: Metabolism of lipids and lipoproteins,Lipases,Lipases,Lipid metabolism,Cancer,Obesity,Lipid metabolism,Adipogenesis

Research Background

Lipoprotein lipase (LPL) is the central enzyme in plasma triglyceride hydrolysis and is secreted by macrophages in the subendothelial space. Evidence has been provided that LPL produced by macrophages in the vessel wall exerts proatherogenic effects. The atherogenic effects of LPL have been mainly attributed to its ability to favor lipid accumulation within macrophages present in the atherosclerotic lesion. Recently, it has also been shown that LPL promote the development of atherosclerosis through facilitation of monocyte adhesion to endothelial cells, stimulation of tumor necrosis factor alpha (TNF) secretion and induction of vascular smooth muscle cell proliferation.

Inhibitor · Natural Compounds · Compound Libraries · Recombinant Proteins

This product is for Research Use Only · Not for Human or Veterinary or Therapeutic Use

Tel:781-999-4286 E_mail:info@targetmol.com Address:34 Washington Street,Wellesley Hills,MA 02481