

Anti-TL1A/TNFSF15 Polyclonal Antibody

Product Details

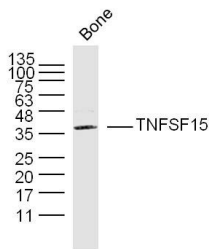
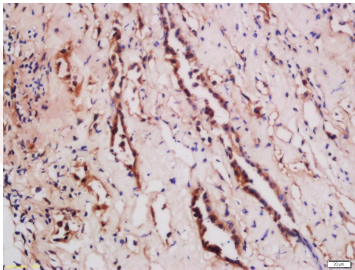
Ig Type: IgG
Reactivity: Human, Mouse (predicted: Rat, Dog, Pig, Cow, Horse, Rabbit, Guinea Pig)
Molecular Weight: Theoretical: 28 kDa. Actual: 38 kDa.
Purification: Protein A purified

Applications

1. Tissue/cell: human kidney tissue; 4% Paraformaldehyde-fixed and paraffin-embedded; Antigen retrieval: citrate buffer (0.01M, pH6.0), Boiling bathing for 15 min; Block endogenous peroxidase by 3% Hydrogen peroxide for 30 min; Blocking buffer (normal goat serum) at 37°C for 20 min;
Incubation: Anti-TNFSF15 Polyclonal Antibody, Unconjugated (TMAB-01069) 1:200, overnight at 4°C, followed by conjugation to the secondary antibody and DAb staining.

Verified Activity:

2. Sample:
bone (mouse) Lysate at 40 µg
Primary: Anti-TNFSF15 (TMAB-01069) at 1/300 dilution
Secondary: IRDye800CW Goat Anti-Rabbit IgG at 1/20000 dilution
Predicted band size: 28 kDa
Observed band size: 38 kDa



Application: IF, IHC-Fr, IHC-P, WB

Recommended WB: 1:500-2000; IHC-P: 1:100-500; IHC-Fr: 1:100-500; IF: 1:100-500

A DRUG SCREENING EXPERT

Properties

Stability & Storage: Store at -20°C or -80°C for 12 months. Avoid repeated freeze-thaw cycles.

Shipping: Shipping with blue ice.

Antigen Details

Immunogen: KLH conjugated synthetic peptide: human TNFSF15

Antigen Species: Human

Gene ID: 9966

Uniprot ID: O95150

Synonyms: TL1A;VEGI;TL1;VEGI192A;VEGI-251;TNFSF15

Biology Area: Inhibitors,CHIP kits,TNF Superfamily

Research Background

Receptor for TNFRSF25 and TNFRSF6B. Mediates activation of NF-kappa-B. Inhibits vascular endothelial growth and angiogenesis (in vitro). Promotes activation of caspases and apoptosis.

Inhibitor · Natural Compounds · Compound Libraries · Recombinant Proteins

This product is for Research Use Only · Not for Human or Veterinary or Therapeutic Use

Tel:781-999-4286 E_mail:info@targetmol.com Address:34 Washington Street,Wellesley Hills,MA 02481