

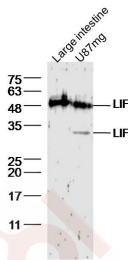
## Anti-LIF Polyclonal Antibody

### Product Details

Ig Type: IgG  
Reactivity: Human, Mouse (predicted: Rat, Dog, Pig, Cow, Rabbit)  
Molecular Weight: Theoretical: 20 kDa. Actual: 30/50 kDa.  
Purification: Protein A purified

### Applications

Sample:  
Large intestine (mouse) Lysate at 40  $\mu$ g  
U87mg cell (human) Lysate at 30  $\mu$ g  
Verified Activity: Primary: Anti-LIF (TMAB-01067) at 1/300 dilution  
Secondary: IRDye800CW Goat Anti-Rabbit IgG at 1/20000 dilution  
Predicted band size: 20 kDa  
Observed band size: 30/50 kDa



Application: WB  
Recommended WB: 1:500-2000

### Properties

Stability & Storage: Store at  $-20^{\circ}\text{C}$  or  $-80^{\circ}\text{C}$  for 12 months. Avoid repeated freeze-thaw cycles.  
Shipping: Shipping with blue ice.

### Antigen Details

Immunogen: KLH conjugated synthetic peptide: human LIF  
Antigen Species: Human  
Gene ID: 3976  
Uniprot ID: P15018  
Synonyms: leukemia inhibitory factor  
Biology Area: Neurogenesis, Cytokines, IL6 Related, Tumor Suppressors, Cell differentiation, Cell differentiation

### Research Background

The leukemia inhibitory factor- LIF is a kind of cell factor that has various living creature functions. It has the leukemia cell of inducement to divide, regulating the growth metabolism of the bone organization, maintaining the basic

## A DRUG SCREENING EXPERT

---

characteristic of the Embryonic stem cells and promoting the mankind build the blood stem cell to divide to propagate, promote the cholinergic neuron to divide, obstruct the fat cell to synthesize, stimulate the muscle cell growth, regulate the liver cell to expect to respond the egg white to synthesize etc. in the acute the biology activity etc. function.

**Inhibitor · Natural Compounds · Compound Libraries · Recombinant Proteins**

This product is for Research Use Only · Not for Human or Veterinary or Therapeutic Use

Tel: 781-999-4286 E\_mail: info@targetmol.com Address: 34 Washington Street, Wellesley Hills, MA 02481