

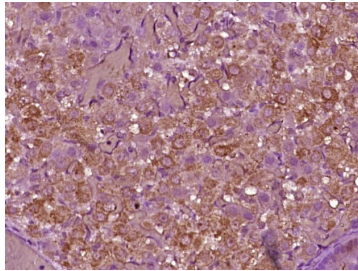
Anti-LHCGR Polyclonal Antibody

Product Details

Ig Type:	IgG
Reactivity:	Rat (predicted:Human,Mouse,Pig,Cow,Horse,Rabbit,Sheep)
Molecular Weight:	Theoretical: 74 kDa.
Purification:	Protein A purified

Applications

Verified Activity: Paraformaldehyde-fixed, paraffin embedded (rat ovary tissue); Antigen retrieval by boiling in sodium citrate buffer (pH6.0) for 15 min; Block endogenous peroxidase by 3% hydrogen peroxide for 20 min; Blocking buffer (normal goat serum) at 37°C for 30 min; Antibody incubation with (LHR) Polyclonal Antibody, Unconjugated (TMAB-01066) at 1:400 overnight at 4°C, followed by operating according to SP Kit (Rabbit) instructions and DAB staining.



Application:	IF,IHC-Fr,IHC-P
Recommended	IHC-P: 1:100-500; IHC-Fr: 1:100-500; IF: 1:100-500

Properties

Stability & Storage:	Store at -20°C or -80°C for 12 months. Avoid repeated freeze-thaw cycles.
Shipping:	Shipping with blue ice.

Antigen Details

Immunogen:	KLH conjugated synthetic peptide: human LHR/CGR
Antigen Species:	Human
Gene ID:	3973
Uniprot ID:	P22888
Synonyms:	LHRHR;LH/CG-R;Lutropin-choriogonadotropic hormone receptor;LHCGR;LGR2;LCGR;Luteinizing hormone receptor (LHR;LSH-R)
Biology Area:	Gonadotrophic axis,More GPCR,GPCR

Research Background

This gene encodes the receptor for both luteinizing hormone and choriogonadotropin. This receptor belongs to the G-protein coupled receptor 1 family, and its activity is mediated by G proteins which activate adenylate cyclase. Mutations in this gene result in disorders of male secondary sexual character development, including familial male precocious puberty, also known as testotoxicosis, hypogonadotropic hypogonadism, Leydig cell adenoma with

precocious puberty, and male pseudohermaphroditism with Leydig cell hypoplasia. [provided by RefSeq]

Inhibitor · Natural Compounds · Compound Libraries · Recombinant Proteins

This product is for Research Use Only · Not for Human or Veterinary or Therapeutic Use

Tel: 781-999-4286 E_mail: info@targetmol.com Address: 34 Washington Street, Wellesley Hills, MA 02481