

Anti-LGR-5 Polyclonal Antibody 2

Product Details

Ig Type:	IgG
Reactivity:	Human, Mouse, Rat (predicted: Pig, Cow, Sheep)
Molecular Weight:	Theoretical: 98 kDa. Actual: 105 kDa.
Purification:	Protein A purified

Applications

1. Sample:

HepG2 (Human) Cell Lysate at 40 µg

Primary: Anti-LGR5 at 1/300 dilution

Secondary: IRDye800CW Goat Anti-Rabbit IgG at 1/20000 dilution

Predicted band size: 98 kDa

Observed band size: 115 kDa

2. Sample:

Lane 1: Cerebrum (Mouse) Lysate at 40 µg

Lane 1: Cerebrum (Rat) Lysate at 40 µg

Primary: Anti-GPR49/LGR5 (TMAB-01064) at 1/1000 dilution

Secondary: IRDye800CW Goat Anti-Rabbit IgG at 1/20000 dilution

Predicted band size: 100 kDa

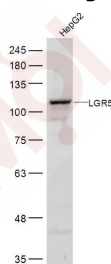
Observed band size: 105 kDa

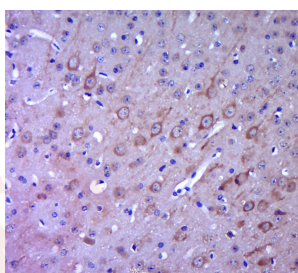
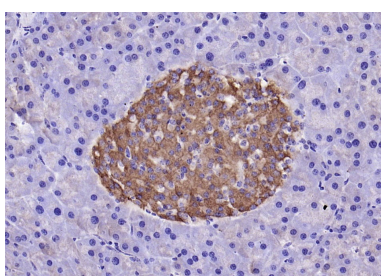
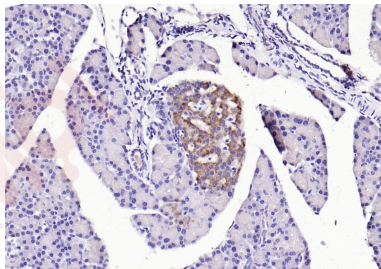
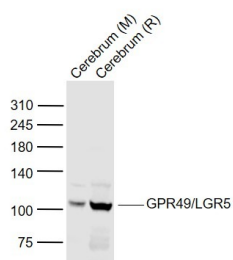
Verified Activity:

3. Paraformaldehyde-fixed, paraffin embedded (mouse pancreas); Antigen retrieval by boiling in sodium citrate buffer (pH6.0) for 15 min; Block endogenous peroxidase by 3% hydrogen peroxide for 20 min; Blocking buffer (normal goat serum) at 37°C for 30 min; Antibody incubation with (GPR49 LGR5) Polyclonal Antibody, Unconjugated (TMAB-01064) at 1:200 overnight at 4°C, followed by operating according to SP Kit (Rabbit) instructions and DAB staining.

4. Paraformaldehyde-fixed, paraffin embedded (rat pancreas); Antigen retrieval by boiling in sodium citrate buffer (pH6.0) for 15 min; Block endogenous peroxidase by 3% hydrogen peroxide for 20 min; Blocking buffer (normal goat serum) at 37°C for 30 min; Antibody incubation with (GPR49 LGR5) Polyclonal Antibody, Unconjugated (TMAB-01064) at 1:200 overnight at 4°C, followed by operating according to SP Kit (Rabbit) instructions and DAB staining.

5. Paraformaldehyde-fixed, paraffin embedded (mouse brain tissue); Antigen retrieval by boiling in sodium citrate buffer (pH6.0) for 15 min; Block endogenous peroxidase by 3% hydrogen peroxide for 20 min; Blocking buffer (normal goat serum) at 37°C for 30 min; Antibody incubation with (GPR49) Polyclonal Antibody, Unconjugated (TMAB-01064) at 1:400 overnight at 4°C, followed by a conjugated secondary for 20 min and DAB staining.





Application: IF,IHC-Fr,IHC-P,WB

Recommended WB: 1:500-2000; IHC-P: 1:100-500; IHC-Fr: 1:100-500; IF: 1:100-500

Properties

Stability & Storage: Store at -20°C or -80°C for 12 months. Avoid repeated freeze-thaw cycles.

Shipping: Shipping with blue ice.

Antigen Details

Immunogen: KLH conjugated synthetic peptide: human GPR49/LGR5

Antigen Species: Human

Gene ID: 8549

Uniprot ID: O75473

Synonyms: LGR5;GPR49;G-protein coupled receptor 67;HG38;G-protein coupled receptor HG38;G-protein coupled receptor 49;GPR67

Biology Area: GPCR,GPCR,Surface Molecules

Research Background

The protein encoded by this gene is a leucine-rich repeat-containing receptor (LGR) and member of the G protein-coupled, 7-transmembrane receptor (GPCR) superfamily. The encoded protein is a receptor for R-spondins and is involved in the canonical Wnt signaling pathway. This protein plays a role in the formation and maintenance of adult intestinal stem cells during postembryonic development. Several transcript variants encoding different isoforms have been found for this gene. [provided by RefSeq, Sep 2015]

Inhibitor · Natural Compounds · Compound Libraries · Recombinant Proteins

This product is for Research Use Only · Not for Human or Veterinary or Therapeutic Use

Tel:781-999-4286 E_mail:info@targetmol.com Address:34 Washington Street,Wellesley Hills,MA 02481