

Anti-LGR-5 Polyclonal Antibody

Product Details

Ig Type:	IgG
Reactivity:	Human, Mouse (predicted: Rat)
Molecular Weight:	Theoretical: 98 kDa. Actual: 98-130 kDa.
Purification:	Protein A purified

Applications

1. Sample:

Brain (Mouse) Lysate at 40 µg

Primary: Anti-GPR49 (TMAB-01063) at 1/300 dilution

Secondary: IRDye800CW Goat Anti-Rabbit IgG at 1/20000 dilution

Predicted band size: 98 kDa

Observed band size: 98 kDa

2. Sample:

LOVO (Human) Cell Lysate at 30 µg

HepG2 (Human) Cell Lysate at 30 µg

Primary: Anti-GPR49 (TMAB-01063) at 1/500 dilution

Secondary: IRDye800CW Goat Anti-Rabbit IgG at 1/20000 dilution

Predicted band size: 98 kDa

Observed band size: 125 kDa

3. Blank control (blue line): Hela (blue).

Primary Antibody (green line): Rabbit Anti-GPR49 antibody (TMAB-01063),

Dilution: 3 µg/10⁶ cells;

Isotype Control Antibody (orange line): Rabbit IgG.

Secondary Antibody (white blue line): Goat anti-rabbit IgG-FITC

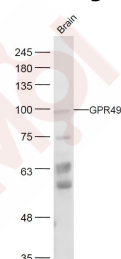
Dilution: 1 µg/test.

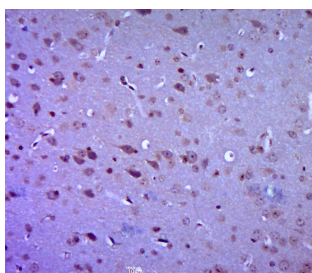
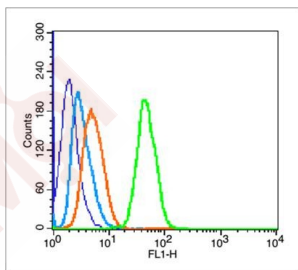
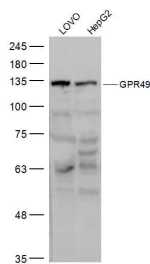
Protocol

The cells were fixed with 70% ethanol (Overnight at 4°C) and then permeabilized with 90% ice-cold methanol for 30 min on ice. Cells stained with Primary Antibody for 30 min at room temperature. The cells were then incubated in 1 X PBS/2% BSA/10% goat serum to block non-specific protein-protein interactions followed by the antibody for 15 min at room temperature. The secondary antibody used for 40 min at room temperature.

4. Paraformaldehyde-fixed, paraffin embedded (mouse brain tissue); Antigen retrieval by boiling in sodium citrate buffer (pH6.0) for 15 min; Block endogenous peroxidase by 3% hydrogen peroxide for 20 min; Blocking buffer (normal goat serum) at 37°C for 30 min; Antibody incubation with (GPR49) Polyclonal Antibody, Unconjugated (TMAB-01063) at 1:400 overnight at 4°C, followed by a conjugated secondary for 20 min and DAB staining.

Verified Activity:





Application: FCM,IF,IHC-Fr,IHC-P,WB

Recommended WB: 1:500-2000; IHC-P: 1:100-500; IHC-Fr: 1:100-500; IF: 1:100-500; FCM: 1µg/Test

Properties

Stability & Storage: Store at -20°C or -80°C for 12 months. Avoid repeated freeze-thaw cycles.

Shipping: Shipping with blue ice.

Antigen Details

Immunogen: KLH conjugated synthetic peptide: mouse GPR49

Antigen Species: Mouse

Gene ID: 14160

Uniprot ID: Q9Z1P4

Synonyms: GPR67;LGR5;G-protein coupled receptor 67;G-protein coupled receptor HG38;G-protein coupled receptor 49;GPR49;HG38

Biology Area: GPCR,GPCR,Surface Molecules

Research Background

The protein encoded by this gene is a leucine-rich repeat-containing receptor (LGR) and member of the G protein-coupled, 7-transmembrane receptor (GPCR) superfamily. The encoded protein is a receptor for R-spondins and is involved in the canonical Wnt signaling pathway. This protein plays a role in the formation and maintenance of adult intestinal stem cells during postembryonic development. Several transcript variants encoding different isoforms have been found for this gene. [provided by RefSeq, Sep 2015]

Inhibitor · Natural Compounds · Compound Libraries · Recombinant Proteins

This product is for Research Use Only · Not for Human or Veterinary or Therapeutic Use

Tel:781-999-4286 E_mail:info@targetmol.com Address:34 Washington Street,Wellesley Hills,MA 02481