

## Anti-LEU5 Polyclonal Antibody

### Product Details

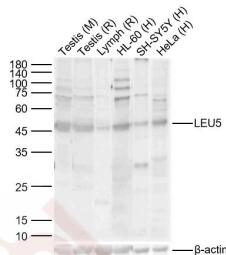
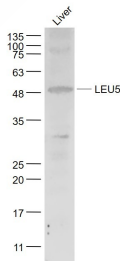
Ig Type: IgG  
Reactivity: Human, Mouse, Rat (predicted: Dog, Pig, Horse, Rabbit, Sheep)  
Molecular Weight: Theoretical: 47 kDa. Actual: 47 kDa.  
Purification: Protein A purified

### Applications

1. Sample:  
Liver (Mouse) Lysate at 40  $\mu$ g  
Primary: Anti-LEU5 (TMAB-01062) at 1/1000 dilution  
Secondary: IRDye800CW Goat Anti-Rabbit IgG at 1/20000 dilution  
Predicted band size: 47 kDa  
Observed band size: 48 kDa

2. Sample:  
Lane 1: Mouse Testis Lysates  
Lane 2: Rat Testis Lysates  
Lane 3: Rat LymphLysates  
Lane 4: Human HL-60 cell Lysates  
Lane 5: Human SH-SY5Y cell Lysates  
Lane 6: Human HeLa cell Lysates  
Primary: Anti-LEU5 (TMAB-01062) at 1/1000 dilution  
Secondary: IRDye800CW Goat Anti-Rabbit IgG at 1/20000 dilution  
Predicted band size: 47 kDa  
Observed band size: 47 kDa

Verified Activity:



Application: WB  
Recommended WB: 1:500-2000

### Properties

Stability & Storage: Store at -20°C or -80°C for 12 months. Avoid repeated freeze-thaw cycles.

Shipping: Shipping with blue ice.

---

### Antigen Details

Immunogen: KLH conjugated synthetic peptide: human LEU5/RFP2

Antigen Species: Human

Gene ID: 10206

Uniprot ID: O60858

Synonyms: RING finger protein 77;Ret finger protein 2;Tripartite motif protein 13;Leukemia associated protein 5;LEU5;B cell chronic lymphocytic leukemia tumor suppressor Leu5;CAR;DLEU5;Putative tumor suppressor RFP2;RNF77;TRI13;TRIM13;HGNC:9976

Biology Area: Cell Cycle Inhibitors,Ubiquitin ligases,Ubiquitylation,Developmental Families,NFkB Pathway

---

### Research Background

This gene encodes a member of the tripartite motif (TRIM) family. The TRIM motif includes three zinc-binding domains, a RING, a B-box type 1 and a B-box type 2, and a coiled-coil region. This gene is located on chromosome 13 within the minimal deletion region for B-cell chronic lymphocytic leukemia. Multiple alternatively spliced transcript variants have been found for this gene.

**Inhibitor · Natural Compounds · Compound Libraries · Recombinant Proteins**

This product is for Research Use Only · Not for Human or Veterinary or Therapeutic Use

Tel:781-999-4286 E\_mail:info@targetmol.com Address:34 Washington Street,Wellesley Hills,MA 02481