

Anti-Leptin Receptor Polyclonal Antibody 2

Product Details

Ig Type:	IgG
Reactivity:	Human,Mouse,Rat (predicted:Horse,Sheep,Goat)
Molecular Weight:	Theoretical: 26 kDa. Actual: 150 kDa.
Purification:	Protein A purified

Applications

1. Tissue/cell: rat colon tissue; 4% Paraformaldehyde-fixed and paraffin-embedded; Antigen retrieval: citrate buffer (0.01M, pH6.0), Boiling bathing for 15 min; Block endogenous peroxidase by 3% Hydrogen peroxide for 30 min; Blocking buffer (normal goat serum) at 37°C for 20 min;

Incubation: Anti-Leptin receptor Polyclonal Antibody, Unconjugated (TMAB-01061) 1:200, overnight at 4°C, followed by conjugation to the secondary antibody and DAB staining.

2. Tissue/cell: Mouse Embryo tissue; 4% Paraformaldehyde-fixed and paraffin-embedded; Antigen retrieval: citrate buffer (0.01M, pH6.0), Boiling bathing for 15 min; Block endogenous peroxidase by 3% Hydrogen peroxide for 30 min; Blocking buffer (normal goat serum) at 37°C for 20 min;

Incubation: Anti-Leptin receptor Polyclonal Antibody, Unconjugated (TMAB-01061) 1:200, overnight at 4°C, followed by conjugation to the secondary antibody and DAB staining.

3. Sample:

Lane 1: Cerebrum (Mouse) Lysate at 40 µg

Lane 2: Cerebrum (Rat) Lysate at 40 µg

Primary: Anti-Leptin receptor (TMAB-01061) at 1/1000 dilution

Secondary: IRDye800CW Goat Anti-Rabbit IgG at 1/20000 dilution

Verified Activity: Predicted band size: 150 kDa

Observed band size: 150 kDa

4. Blank control: K562. Primary Antibody (green line): Rabbit Anti-Leptin receptor antibody (TMAB-01061)

Dilution: 2 µg/10⁶ cells;

Isotype Control Antibody (orange line): Rabbit IgG.

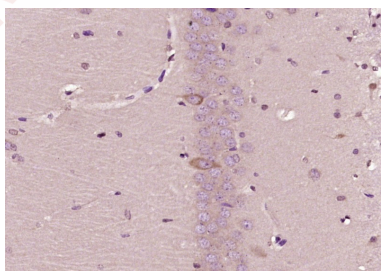
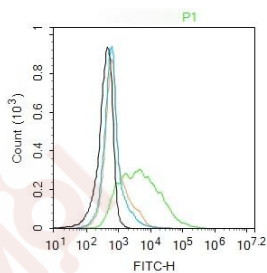
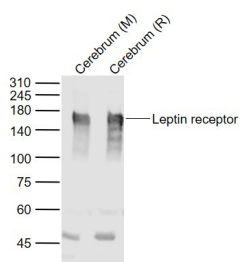
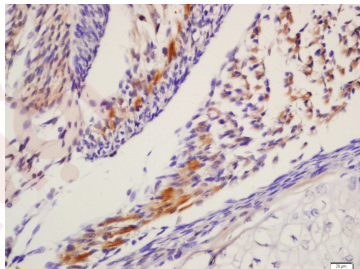
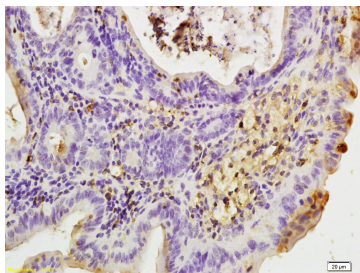
Secondary Antibody: Goat anti-rabbit IgG-AF488

Dilution: 1 µg/test.

Protocol

The cells were incubated in 5% BSA to block non-specific protein-protein interactions for 30 min at room temperature. Cells stained with Primary Antibody for 30 min at room temperature. The secondary antibody used for 40 min at room temperature.

5. Paraformaldehyde-fixed, paraffin embedded (Rat brain); Antigen retrieval by boiling in sodium citrate buffer (pH6.0) for 15 min; Block endogenous peroxidase by 3% hydrogen peroxide for 20 min; Blocking buffer (normal goat serum) at 37°C for 30 min; Antibody incubation with (Leptin receptor) Polyclonal Antibody, Unconjugated (TMAB-01061) at 1:400 overnight at 4°C, followed by operating according to SP Kit (Rabbit) instructions and DAB staining.



Application: FCM,IF,IHC-Fr,IHC-P,WB

Recommended WB: 1:500-2000; IHC-P: 1:100-500; IHC-Fr: 1:100-500; IF: 1:100-500; FCM: 2ug/Test

Properties

Stability & Storage: Store at -20°C or -80°C for 12 months. Avoid repeated freeze-thaw cycles.

Shipping: Shipping with blue ice.

Antigen Details

Immunogen:	KLH conjugated synthetic peptide: human Leptin receptor
Antigen Species:	Human
Gene ID:	3953
Uniprot ID:	P48357
Synonyms:	LEP-R;CD295;OBR;OB-R;leptin receptor;LEPRD
Biology Area:	Metabolism of lipids and lipoproteins, Metabolism, Fatty acids, Lipid metabolism, Fatty acid oxidation, Obesity, Hormones

Research Background

The protein encoded by this gene belongs to the gp130 family of cytokine receptors that are known to stimulate gene transcription via activation of cytosolic STAT proteins. This protein is a receptor for leptin (an adipocyte-specific hormone that regulates body weight), and is involved in the regulation of fat metabolism, as well as in a novel hematopoietic pathway that is required for normal lymphopoiesis. Mutations in this gene have been associated with obesity and pituitary dysfunction. Alternatively spliced transcript variants encoding different isoforms have been described for this gene. It is noteworthy that this gene and LEPROT gene (GeneID:54741) share the same promoter and the first 2 exons, however, encode distinct proteins (PMID:9207021).[provided by RefSeq, Nov 2010]

Inhibitor · Natural Compounds · Compound Libraries · Recombinant Proteins

This product is for Research Use Only · Not for Human or Veterinary or Therapeutic Use

Tel:781-999-4286 E_mail:info@targetmol.com Address:34 Washington Street,Wellesley Hills,MA 02481