

Anti-Leptin Receptor Polyclonal Antibody

Product Details

Ig Type:	IgG
Reactivity:	Human, Mouse (predicted: Rat, Dog, Pig, Cow, Sheep)
Molecular Weight:	Theoretical: 126 kDa.
Purification:	Protein A purified

Applications

1. Cell: (mo) hepatocyte (2% BSA at 4° blocked for 30 minutes. 1% Paraformaldehyde fixed for 30 minutes, 0.1% Triton X-100 permeabilized for 2 minutes).

Concentration: 1:100. Incubation: 40 minutes.

Host/Blank: Hepatocytes.

Flow cytometric analysis of Rabbit Anti-Leptin receptor (long)/AF488 Conjugated antibody (TMAB-01060-AF488) (green) compared with control in the absence of primary antibody (blue) followed by (mo) hepatocytes.

2. Blank control: K562. Primary Antibody (green line): Rabbit Anti-Leptin receptor antibody (TMAB-01060)

Dilution: 1 µg/10⁶ cells;

Isotype Control Antibody (orange line): Rabbit IgG.

Secondary Antibody: Goat anti-rabbit IgG-AF488

Dilution: 1 µg/test.

Protocol

Verified Activity: The cells were incubated in 5% BSA to block non-specific protein-protein interactions for 30 min at room temperature. Cells stained with Primary Antibody for 30 min at room temperature. The secondary antibody used for 40 min at room temperature.

3. Blank control (Black line): Raji (Black).

Primary Antibody (green line): Rabbit Anti-Leptin receptor antibody (TMAB-01060)

Dilution: 1 µg/10⁶ cells;

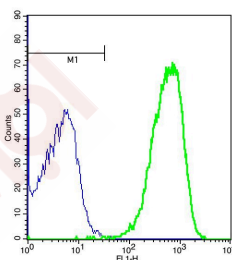
Isotype Control Antibody (orange line): Rabbit IgG.

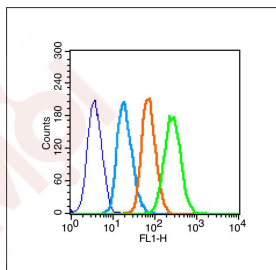
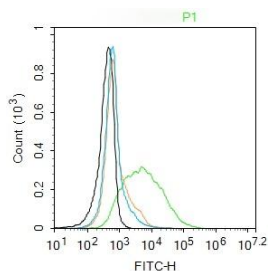
Secondary Antibody (white blue line): Goat anti-rabbit IgG-PE

Dilution: 1 µg/test.

Protocol

The cells were fixed with 70% ice-cold methanol overnight at 4°C and then permeabilized with 0.1% PBS-Tween for 20 min at room temperature. Cells stained with Primary Antibody for 30 min at room temperature. The cells were then incubated in 1 X PBS/2% BSA/10% goat serum to block non-specific protein-protein interactions followed by the antibody for 15 min at room temperature. The secondary antibody used for 40 min at room temperature.





Application: FCM
Recommended FCM: 1µg/Test

Properties

Stability & Storage: Store at -20°C or -80°C for 12 months. Avoid repeated freeze-thaw cycles.

Shipping: Shipping with blue ice.

Antigen Details

Immunogen: KLH conjugated synthetic peptide: human Leptin receptor
Antigen Species: Human
Gene ID: 3953
Uniprot ID: P48357
Synonyms: leptin receptor; OBR; LEP-R; LEPRD; CD295; OB-R
Biology Area: Metabolism of lipids and lipoproteins, Metabolism, Fatty acids, Lipid metabolism, Fatty acid oxidation, Obesity, Hormones

Research Background

The protein encoded by this gene belongs to the gp130 family of cytokine receptors that are known to stimulate gene transcription via activation of cytosolic STAT proteins. This protein is a receptor for leptin (an adipocyte-specific hormone that regulates body weight), and is involved in the regulation of fat metabolism, as well as in a novel hematopoietic pathway that is required for normal lymphopoiesis. Mutations in this gene have been associated with obesity and pituitary dysfunction. Alternatively spliced transcript variants encoding different isoforms have been described for this gene. It is noteworthy that this gene and LEPROT gene (GeneID:54741) share the same promoter and the first 2 exons, however, encode distinct proteins (PMID:9207021).[provided by RefSeq, Nov 2010]

Inhibitor · Natural Compounds · Compound Libraries · Recombinant Proteins

This product is for Research Use Only · Not for Human or Veterinary or Therapeutic Use

Tel: 781-999-4286 E_mail: info@targetmol.com Address: 34 Washington Street, Wellesley Hills, MA 02481