

Anti-LEF1 Polyclonal Antibody

Product Details

Ig Type:	IgG
Reactivity:	Human, Mouse (predicted: Rat, Chicken, Dog, Pig, Cow, Rabbit)
Molecular Weight:	Theoretical: 44 kDa. Actual: 55 kDa.
Purification:	Protein A purified

Applications

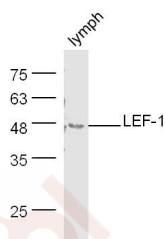
1. Sample: LymphNodes (Mouse) Lysate at 30 µg
Primary: Anti-LEF-1 (TMAB-01058) at 1/300 dilution
Secondary: IRDye800CW Goat Anti-Mouse IgG at 1/10000 dilution
Predicted band size: 44 kDa
Observed band size: 47 kDa

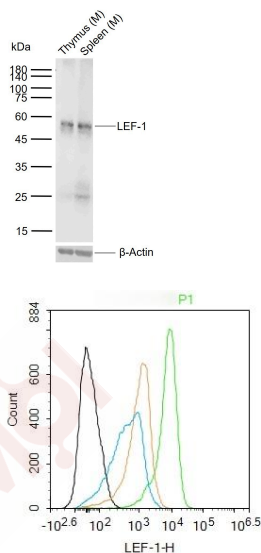
2. Sample:

Lane 1: Mouse Thymus tissue lysates
Lane 2: Mouse Spleen tissue lysates
Primary: Anti-LEF-1 (TMAB-01058) at 1/1000 dilution
Secondary: IRDye800CW Goat Anti-Rabbit IgG at 1/20000 dilution
Predicted band size: 44 kDa
Observed band size: 55 kDa

Verified Activity: 3. Blank control (black line): Molt4. Primary Antibody (green line): Rabbit Anti-LEF-1 antibody (TMAB-01058)
Dilution: 1 µg/Test;
Secondary Antibody: Goat anti-rabbit IgG-AF488
Dilution: 0.5 µg/Test.
Negative control (white blue line): PBS
Isotype control (orange line): Normal Rabbit IgG
Protocol

The cells were fixed with 4% PFA (10 min at room temperature) and then permeabilized with 90% ice-cold methanol for 20 min at -20°C. The cells were then incubated in 5% BSA to block non-specific protein-protein interactions for 30 min at room temperature. Cells stained with Primary Antibody for 30 min at room temperature. The secondary antibody used for 40 min at room temperature.





Application: FCM,WB

Recommended WB: 1:500-2000; FCM: 1ug/test

Properties

Stability & Storage: Store at -20°C or -80°C for 12 months. Avoid repeated freeze-thaw cycles.

Shipping: Shipping with blue ice.

Antigen Details

Immunogen: KLH conjugated synthetic peptide: human LEF-1

Antigen Species: Human

Gene ID: 51176

Uniprot ID: Q9UJU2

Synonyms: Lymphoid enhancer-binding factor 1;T cell-specific transcription factor 1-alpha;TCF1-alpha; LEF-1

Biology Area: PTC & Wnt pathway,Mesoderm,HMG Box,Transcription Factors,Mesoderm,Nuclear

Research Background

This gene encodes a transcription factor belonging to a family of proteins that share homology with the high mobility group protein-1. The protein encoded by this gene can bind to a functionally important site in the T-cell receptor-alpha enhancer, thereby conferring maximal enhancer activity. This transcription factor is involved in the Wnt signaling pathway, and it may function in hair cell differentiation and follicle morphogenesis. Mutations in this gene have been found in somatic sebaceous tumors. This gene has also been linked to other cancers, including androgen-independent prostate cancer. Alternative splicing results in multiple transcript variants. [provided by RefSeq, Oct 2009].

Inhibitor · Natural Compounds · Compound Libraries · Recombinant Proteins

This product is for Research Use Only · Not for Human or Veterinary or Therapeutic Use

Tel:781-999-4286

E_mail:info@targetmol.com

Address:34 Washington Street,Wellesley Hills,MA 02481