

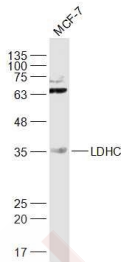
## Anti-LDHC Polyclonal Antibody

### Product Details

Ig Type: IgG  
Reactivity: Human (predicted:Mouse,Rat,Dog,Cow,Horse,Rabbit)  
Molecular Weight: Theoretical: 36 kDa. Actual: 36 kDa.  
Purification: Protein A purified

### Applications

Sample: MCF-7 (Human) Cell Lysate at 30 µg  
Verified Activity: Primary: Anti-LDHC (TMAB-01056) at 1/1000 dilution  
Secondary: IRDye800CW Goat Anti-Rabbit IgG at 1/20000 dilution  
Predicted band size: 36 kDa  
Observed band size: 36 kDa



Application: WB  
Recommended WB: 1:500-2000

### Properties

Stability & Storage: Store at -20°C or -80°C for 12 months. Avoid repeated freeze-thaw cycles.  
Shipping: Shipping with blue ice.

### Antigen Details

Immunogen: KLH conjugated synthetic peptide: human LDHC  
Antigen Species: Human  
Gene ID: 3948  
Uniprot ID: P07864  
Biology Area: Lactic Dehydrogenase,Energy Metabolism,Cancer,Energy Metabolism

### Research Background

Lactate dehydrogenase C catalyzes the conversion of L-lactate and NAD to pyruvate and NADH in the final step of anaerobic glycolysis. LDHC is testis-specific and belongs to the lactate dehydrogenase family. Two transcript variants have been detected which differ in the 5' untranslated region. [provided by RefSeq, Jul 2008].

**Inhibitor · Natural Compounds · Compound Libraries · Recombinant Proteins**

This product is for Research Use Only · Not for Human or Veterinary or Therapeutic Use

Tel:781-999-4286 E\_mail:info@targetmol.com Address:34 Washington Street,Wellesley Hills,MA 02481