

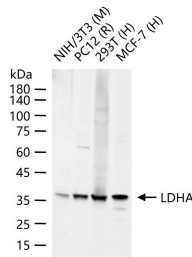
## Anti-LDHA Polyclonal Antibody

### Product Details

Ig Type:	IgG
Reactivity:	Human,Mouse,Rat
Molecular Weight:	Theoretical: 37 kDa. Actual: 37 kDa.
Purification:	Protein A purified

### Applications

**Verified Activity:** 25 µg total protein per Lane of various lysates probed with LDHA polyclonal antibody, unconjugated (TMAB-01055) at 1:1000 dilution and 4°C overnight incubation. Followed by conjugated secondary antibody incubation at RT for 60 min.



Application:	IF,IHC-Fr,IHC-P,WB
Recommended	IF=1:100-500; IHC-Fr=1:100-500; IHC-P=1:100-500; WB=1:500-2000

### Properties

Stability & Storage:	Store at -20°C or -80°C for 12 months. Avoid repeated freeze-thaw cycles.
Shipping:	Shipping with blue ice.

### Antigen Details

Immunogen:	KLH conjugated synthetic peptide: human LDHA
Antigen Species:	Human
Gene ID:	3939
Uniprot ID:	P00338
Synonyms:	L-Lactate Dehydrogenase A Chain;Cell Proliferation-Inducing Gene 19 Protein;LDHA;LDH-M;LDH Muscle Subunit;Renal Carcinoma Antigen NY-REN-59;LDH-A
Biology Area:	Metabolism of carbohydrates,Dehydrogenase Kits,NADP/NADPH,Carbohydrate metabolism, Energy Metabolism,Cancer,Energy Metabolism

### Research Background

The protein encoded by this gene catalyzes the conversion of L-lactate and NAD to pyruvate and NADH in the final step of anaerobic glycolysis. The protein is found predominantly in muscle tissue and belongs to the lactate dehydrogenase family. Mutations in this gene have been linked to exertional myoglobinuria. Multiple transcript variants encoding different isoforms have been found for this gene. The human genome contains several non-transcribed pseudogenes of this gene. [provided by RefSeq].

**Inhibitor · Natural Compounds · Compound Libraries · Recombinant Proteins**

This product is for Research Use Only · Not for Human or Veterinary or Therapeutic Use

Tel:781-999-4286 E\_mail:info@targetmol.com Address:34 Washington Street,Wellesley Hills,MA 02481