

Anti-LCLAT1 Polyclonal Antibody

Product Details

Ig Type:	IgG
Reactivity:	Mouse,Rat (predicted:Human,Dog,Cow,Horse,Rabbit,Sheep)
Molecular Weight:	Theoretical: 49 kDa. Actual: 49 kDa.
Purification:	Protein A purified

Applications

1. Sample:

Heart (Mouse) Lysate at 40 μ g

Heart (Rat) Lysate at 40 μ g

Primary: Anti-LCLAT1 (TMAB-01054) at 1/1000 dilution

Secondary: IRDye800CW Goat Anti-Rabbit IgG at 1/20000 dilution

Predicted band size: 52 kDa

Observed band size: 52 kDa

2. Sample: Heart (Mouse) lysate at 40 μ g

Primary: Anti-LCLAT1 (TMAB-01054) at 1/300 dilution

Verified Activity: Secondary: IRDye800CW Goat Anti-RabbitIgG at 1/20000 dilution

Predicted band size: 49 kDa

Observed band size: 49 kDa

3. Sample:

Liver (Mouse) lysate at 40 μ g

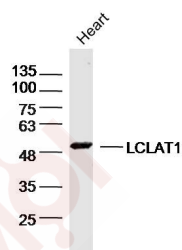
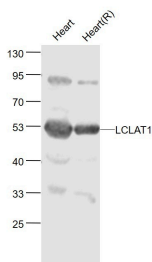
Kidney (Mouse) lysate at 40 μ g

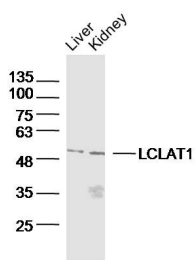
Primary: Anti-LCLAT1 (TMAB-01054) at 1/300 dilution

Secondary: IRDye800CW Goat Anti-RabbitIgG at 1/20000 dilution

Predicted band size: 49 kDa

Observed band size: 49 kDa





Application: WB

Recommended WB: 1:500-2000

Properties

Stability & Storage: Store at -20°C or -80°C for 12 months. Avoid repeated freeze-thaw cycles.

Shipping: Shipping with blue ice.

Antigen Details

Immunogen: KLH conjugated synthetic peptide: human LCLAT1

Antigen Species: Human

Gene ID: 253558

Uniprot ID: Q6UWP7

Synonyms: 1-acylglycerol-3-phosphate O-acyltransferase 8 (1-AGP acyltransferase 8; 1-AGPAT 8); LCLAT1; LYCAT; AGPAT8; Acyl-CoA:lysocardiolipin acyltransferase 1; ALCAT1; Lysocardiolipin acyltransferase 1

Biology Area: Lipid metabolism, Mitochondrial markers, Lipid Phosphatases

Research Background

Acyl-CoA:lysocardiolipin acyltransferase. Possesses both lysophosphatidylinositol acyltransferase (LPIAT) and lysophosphatidylglycerol acyltransferase (LPGAT) activities. Recognizes both monolysocardiolipin and dilyocardiolipin as substrates with a preference for linoleoyl-CoA and oleoyl-CoA as acyl donors. Acts as a remodeling enzyme for cardiolipin, a major membrane polyglycerophospholipid. Converts lysophosphatidic acid (LPA) into phosphatidic acid (PA) with a relatively low activity. Required for establishment of the hematopoietic and endothelial lineages.

Inhibitor · Natural Compounds · Compound Libraries · Recombinant Proteins

This product is for Research Use Only · Not for Human or Veterinary or Therapeutic Use

Tel: 781-999-4286 E_mail: info@targetmol.com Address: 34 Washington Street, Wellesley Hills, MA 02481