

## Anti-LC3B Polyclonal Antibody 2

### Product Details

Ig Type: IgG  
Reactivity: Human, Mouse, Rat  
Molecular Weight: Theoretical: 14 kDa. Actual: 15,17 kDa.  
Purification: Protein A purified

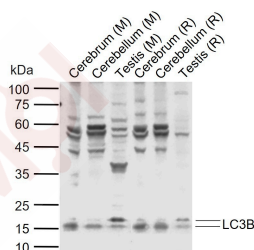
### Applications

#### Sample:

Lane 1: Mouse Cerebrum tissue lysates  
Lane 2: Mouse Cerebellum tissue lysates  
Lane 3: Mouse Testis tissue lysates  
Lane 4: Rat Cerebrum tissue lysates

#### Verified Activity:

Lane 5: Rat Cerebellum tissue lysates  
Lane 6: Rat Testis tissue lysates  
Primary: Anti-LC3B (TMAB-01053) at 1/1000 dilution  
Secondary: IRDye800CW Goat Anti-Rabbit IgG at 1/20000 dilution  
Predicted band size: 14 kDa  
Observed band size: 15,17 kDa



Application: WB  
Recommended WB=1:500-2000

### Properties

Stability & Storage: Store at -20°C or -80°C for 12 months. Avoid repeated freeze-thaw cycles.  
Shipping: Shipping with blue ice.

### Antigen Details

Immunogen:	KLH conjugated synthetic peptide: mouse LC3B
Antigen Species:	Mouse
Gene ID:	67443
Uniprot ID:	Q9CQV6
Synonyms:	LC3B;microtubule-associated protein 1 light chain 3 beta;MAP1A/1BLC3;MAP1LC3B-a;ATG8F;microtubule-associated protein 1 light chain 3 $\beta$
Biology Area:	APG gene products,Signal Transduction,Autophagy,APG gene products,Autophagy and mitophagy,APG gene products,Neurogenesis,MAP

---

### Research Background

A major contributor to cellular homeostasis is the ability of the cell to strike a balance between the formation and degradation/removal of its cellular components. This process of internal cellular turn-over is called autophagy (self-eating), and is facilitated by a pathway of around 16 interacting proteins in the human. LC3, a ubiquitin-like modifier protein, is the human homolog of yeast Apg8 and is involved in the formation of autophagosomal vacuoles, called autophagosomes. LC3 is expressed as 3 splice variants (LC3A, LC3B and LC3C), which exhibit different tissue distributions and are processed into cytosolic and autophagosomal membrane-bound forms, termed LC3-I and LC3-II, respectively. A disruption to the autophagic process is now associated with the progression of several cancers, neurodegenerative disorders and cardiac pathologies, where LC3 is widely employed as a marker for autophagy.

**Inhibitor · Natural Compounds · Compound Libraries · Recombinant Proteins**

This product is for Research Use Only · Not for Human or Veterinary or Therapeutic Use

Tel:781-999-4286 E\_mail:info@targetmol.com Address:34 Washington Street,Wellesley Hills,MA 02481