

Anti-LC3B Polyclonal Antibody

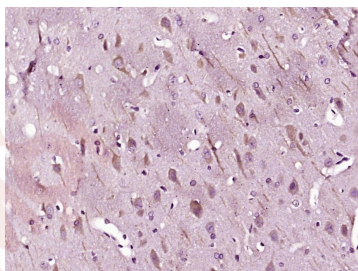
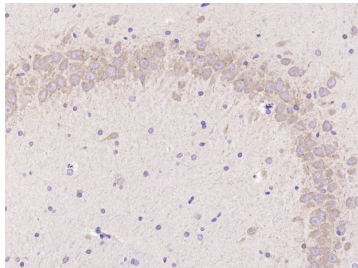
Product Details

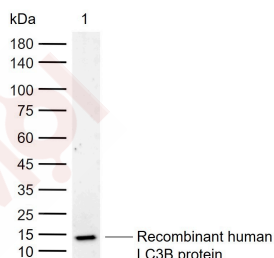
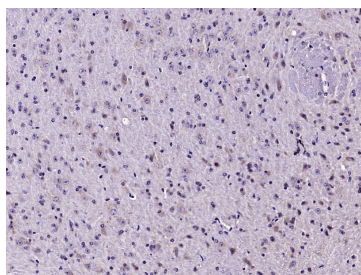
Ig Type:	IgG
Reactivity:	Mouse,Rat,Rabbit (predicted:Human,Chicken,Dog,Pig,Cow,Horse,Zebrafish)
Molecular Weight:	Theoretical: 13 kDa.
Purification:	Protein A purified

Applications

Verified Activity:

1. Paraformaldehyde-fixed, paraffin embedded (Rat brain); Antigen retrieval by microwave in sodium citrate buffer (pH6.0); Block endogenous peroxidase by 3% hydrogen peroxide for 30 minutes; Blocking buffer (3% BSA) at RT for 30 min; Antibody incubation with (LC3B) Polyclonal Antibody, Unconjugated (TMAB-01052) at 1:400 overnight at 4°C, followed by conjugation to the secondary antibody (labeled with HRP) and DAB staining.
2. Paraformaldehyde-fixed, paraffin embedded (Rabbit brain); Antigen retrieval by boiling in sodium citrate buffer (pH6.0) for 15 min; Block endogenous peroxidase by 3% hydrogen peroxide for 20 min; Blocking buffer (normal goat serum) at 37°C for 30 min; Antibody incubation with (LC3B) Polyclonal Antibody, Unconjugated (TMAB-01052) at 1:400 overnight at 4°C, followed by operating according to SP Kit (Rabbit) instructions and DAB staining.
3. Paraformaldehyde-fixed, paraffin embedded (Mouse brain); Antigen retrieval by microwave in sodium citrate buffer (pH6.0); Block endogenous peroxidase by 3% hydrogen peroxide for 30 minutes; Blocking buffer (3% BSA) at RT for 30 min; Antibody incubation with (LC3B) Polyclonal Antibody, Unconjugated (TMAB-01052) at 1:400 overnight at 4°C, followed by conjugation to the secondary antibody (labeled with HRP) and DAB staining.
4. Sample:
Lane 1: Recombinant human LC3B protein, N-His at 1/1000 dilution
Secondary: IRDye800CW Goat Anti-Rabbit IgG at 1/20000 dilution
Predicted band size: 13 kDa
Observed band size: 15 kDa





Application: IF,IHC-Fr,IHC-P

Recommended IF=1:100-500; IHC-Fr=1:100-500; IHC-P=1:100-500

Properties

Stability & Storage: Store at -20°C or -80°C for 12 months. Avoid repeated freeze-thaw cycles.

Shipping: Shipping with blue ice.

Antigen Details

Immunogen: KLH conjugated synthetic peptide: human LC3A/B

Antigen Species: Human

Gene ID: 81631

Uniprot ID: Q9GZQ8

Synonyms: MAP1LC3B-a;microtubule-associated protein 1 light chain 3 beta;microtubule-associated protein 1 light chain 3 β ;ATG8F;LC3B;MAP1A/1BLC3

Biology Area: APG gene products,Signal Transduction,Autophagy,APG gene products,Autophagy and mitophagy,APG gene products,Neurogenesis,MAP

Research Background

A major contributor to cellular homeostasis is the ability of the cell to strike a balance between the formation and degradation/removal of its cellular components. This process of internal cellular turn-over is called autophagy (self-eating), and is facilitated by a pathway of around 16 interacting proteins in the human. LC3, a ubiquitin-like modifier protein, is the human homolog of yeast Apg8 and is involved in the formation of autophagosomal vacuoles, called autophagosomes. LC3 is expressed as 3 splice variants (LC3A, LC3B and LC3C), which exhibit different tissue distributions and are processed into cytosolic and autophagosomal membrane-bound forms, termed LC3-I and LC3-II, respectively. A disruption to the autophagic process is now associated with the progression of several cancers, neurodegenerative disorders and cardiac pathologies, where LC3 is widely employed as a marker for autophagy.

Inhibitor · Natural Compounds · Compound Libraries · Recombinant Proteins

This product is for Research Use Only · Not for Human or Veterinary or Therapeutic Use

Tel:781-999-4286 E_mail:info@targetmol.com Address:34 Washington Street,Wellesley Hills,MA 02481