

Anti-LAPTM5 Polyclonal Antibody

Product Details

Ig Type: IgG
Reactivity: Human (predicted:Mouse,Rat,Chicken,Horse,Rabbit)
Molecular Weight: Theoretical: 30 kDa.
Purification: Protein A purified

Applications

Blank control (black line): U937. Primary Antibody (green line): Rabbit Anti-LAPTM5 antibody (TMAB-01048)

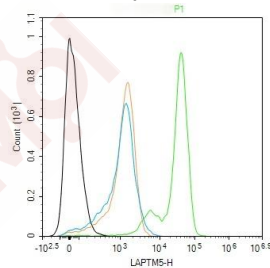
Dilution: 2 µg/Test;

Secondary Antibody (white blue line): Goat anti-rabbit IgG-AF488

Dilution: 0.5 µg/Test.

Verified Activity: Isotype control (orange line): Normal Rabbit IgG Protocol

The cells were fixed with 4% PFA (10 min at room temperature) and then permeabilized with 90% ice-cold methanol for 20 min at -20°C, The cells were then incubated in 5% BSA to block non-specific protein-protein interactions for 30 min at room temperature. Cells stained with Primary Antibody for 30 min at room temperature. The secondary antibody used for 40 min at room temperature.



Application: FCM
Recommended FCM: 2ug/Test

Properties

Stability & Storage: Store at -20°C or -80°C for 12 months. Avoid repeated freeze-thaw cycles.
Shipping: Shipping with blue ice.

Antigen Details

Immunogen: KLH conjugated synthetic peptide: human LPTM5
Antigen Species: Human
Gene ID: 7805
Uniprot ID: Q13571
Synonyms: LAPM5;Retinoic acid-inducible E3 protein;LPTM5;Lysosomal-associated transmembrane protein 5;Lysosomal-associated multitransmembrane protein 5

Research Background

This gene encodes a transmembrane receptor that is associated with lysosomes. The encoded protein, also known as E3 protein, may play a role in hematopoiesis. [provided by RefSeq, Feb 2009]

Inhibitor · Natural Compounds · Compound Libraries · Recombinant Proteins

This product is for Research Use Only · Not for Human or Veterinary or Therapeutic Use

Tel:781-999-4286 E_mail:info@targetmol.com Address:34 Washington Street,Wellesley Hills,MA 02481