

Anti-LAMP1 Polyclonal Antibody

Product Details

Ig Type:	IgG
Reactivity:	Human
Molecular Weight:	Theoretical: 42 kDa. Actual: 95 kDa.
Purification:	Protein A purified

Applications

1. Sample:

Lane 1: Human HT-1080 cell lysates

Lane 2: Human HeLa cell lysates

Lane 3: Human JAR cell lysates

Primary: Anti-LAMP1 (TMAB-01046) at 1/1000 dilution

Secondary: IRDye800CW Goat Anti-Rabbit IgG at 1/20000 dilution

Observed band size: 95 kDa

2. Blank control: Jurkat.

Primary Antibody (green line): Rabbit Anti-LAMP1 antibody (TMAB-01046)

Dilution: 2 µg/Test;

Secondary Antibody (white blue line): Goat anti-rabbit IgG-FITC

Dilution: 0.5 µg/Test.

Isotype control (orange line): Normal Rabbit IgG

Protocol

The cells were incubated in 5% BSA to block non-specific protein-protein interactions for 30 min at room temperature. Cells stained with Primary Antibody for 30 min at room temperature. The secondary antibody used for 40 min at room temperature.

Verified Activity:

3. 4% Paraformaldehyde-fixed MCF-7 (H) cell; Triton X-100 at RT for 20 min; Antibody incubation with (LAMP1) polyclonal Antibody, unconjugated (TMAB-01046) 1:200, 90 min at 37°C; followed by conjugated Goat Anti-Rabbit IgG antibody (green) at 37°C for 90 min, DAPI (blue) was used to stain the cell nucleus. PBS instead of the primary antibody was used as the blank control.

4. Paraformaldehyde-fixed, paraffin embedded Human Liver; Antigen retrieval by boiling in sodium citrate buffer (pH6.0) for 15 min; Antibody incubation with LAMP1 Polyclonal Antibody, Unconjugated (TMAB-01046) at 1:100 overnight at 4°C, followed by conjugation to the secondary antibody and DAB staining.

5. Paraformaldehyde-fixed, paraffin embedded Human Heart; Antigen retrieval by boiling in sodium citrate buffer (pH6.0) for 15 min; Antibody incubation with LAMP1 Polyclonal Antibody, Unconjugated (TMAB-01046) at 1:100 overnight at 4°C, followed by conjugation to the secondary antibody and DAB staining.

6. Paraformaldehyde-fixed, paraffin embedded Human Lung; Antigen retrieval by boiling in sodium citrate buffer (pH6.0) for 15 min; Antibody incubation with LAMP1 Polyclonal Antibody, Unconjugated (TMAB-01046) at 1:200 overnight at 4°C, followed by conjugation to the secondary antibody and DAB staining.

7. Paraformaldehyde-fixed, paraffin embedded Human Lung Cancer; Antigen retrieval by boiling in sodium citrate buffer (pH6.0) for 15 min; Antibody incubation with LAMP1 Polyclonal Antibody, Unconjugated (TMAB-01046) at 1:200 overnight at 4°C, followed by conjugation to the secondary antibody and DAB staining.

8. Paraformaldehyde-fixed, paraffin embedded Human Liver Cancer; Antigen retrieval by boiling in sodium citrate buffer (pH6.0) for 15 min; Antibody incubation with LAMP1 Polyclonal Antibody, Unconjugated (TMAB-01046) at 1:200 overnight at 4°C, followed by conjugation to the secondary antibody and DAB staining.

9. Paraformaldehyde-fixed, paraffin embedded Human Tonsil; Antigen retrieval by boiling in sodium citrate buffer (pH6.0) for 15 min; Antibody incubation with LAMP1 Polyclonal Antibody, Unconjugated (TMAB-01046) at 1:200 overnight at 4°C, followed by conjugation to the secondary antibody and DAB staining.

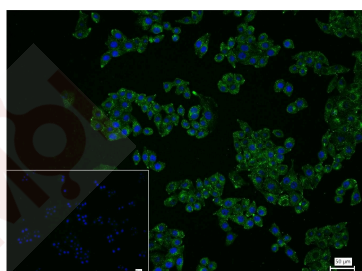
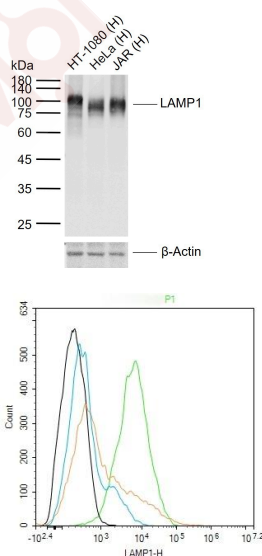
10. Paraformaldehyde-fixed, paraffin embedded Human Testicles; Antigen retrieval by boiling in sodium citrate buffer (pH6.0) for 15 min; Antibody incubation with LAMP1 Polyclonal Antibody, Unconjugated (TMAB-01046) at 1:200 overnight at 4°C, followed by conjugation to the secondary antibody and DAB staining.

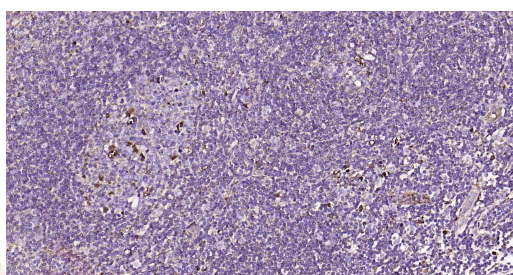
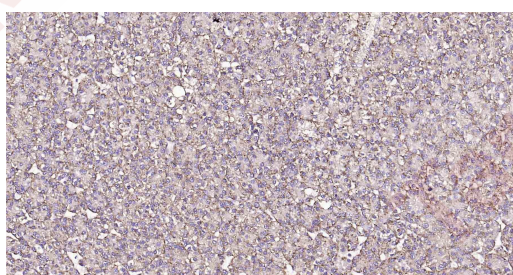
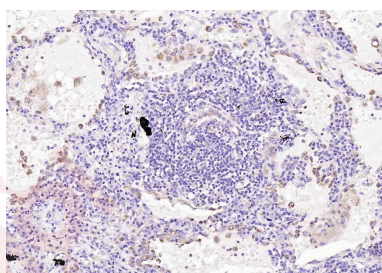
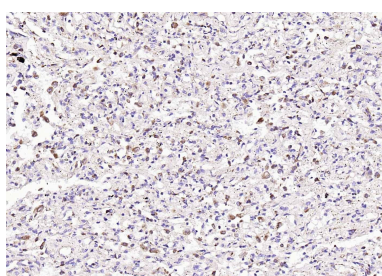
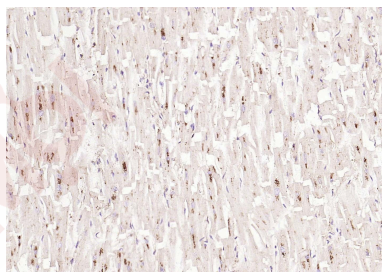
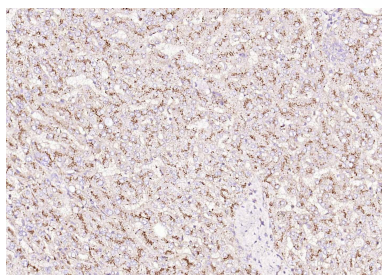
11. Paraformaldehyde-fixed, paraffin embedded Human Colon; Antigen retrieval by boiling in sodium citrate buffer (pH6.0) for 15 min; Antibody incubation with LAMP1 Polyclonal Antibody, Unconjugated (TMAB-01046) at 1:200 overnight at 4°C, followed by conjugation to the secondary antibody and DAB staining.

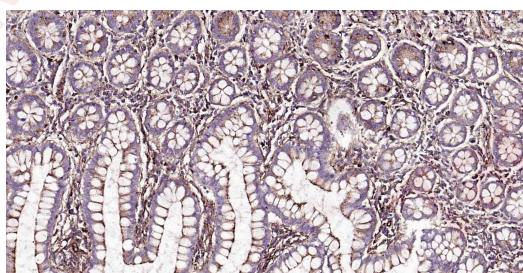
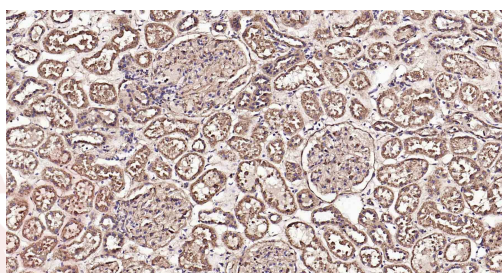
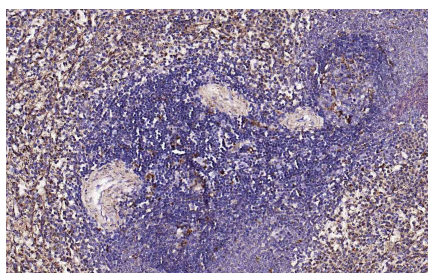
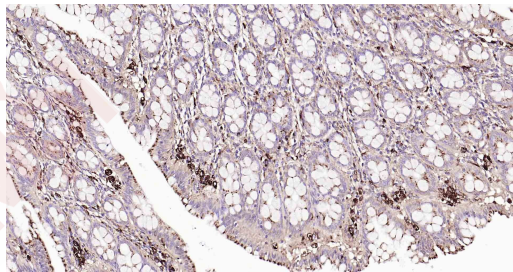
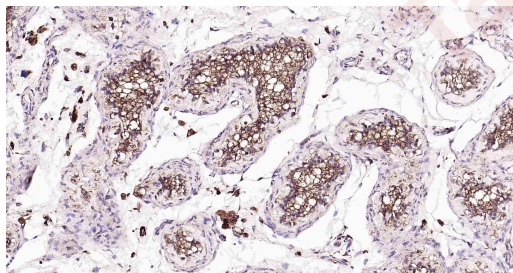
12. Paraformaldehyde-fixed, paraffin embedded Human Spleen; Antigen retrieval by boiling in sodium citrate buffer (pH6.0) for 15 min; Antibody incubation with LAMP1 Polyclonal Antibody, Unconjugated (TMAB-01046) at 1:200 overnight at 4°C, followed by conjugation to the secondary antibody and DAB staining.

13. Paraformaldehyde-fixed, paraffin embedded Human Kidney; Antigen retrieval by boiling in sodium citrate buffer (pH6.0) for 15 min; Antibody incubation with LAMP1 Polyclonal Antibody, Unconjugated (TMAB-01046) at 1:200 overnight at 4°C, followed by conjugation to the secondary antibody and DAB staining.

14. Paraformaldehyde-fixed, paraffin embedded Human Small Intestine; Antigen retrieval by boiling in sodium citrate buffer (pH6.0) for 15 min; Antibody incubation with LAMP1 Polyclonal Antibody, Unconjugated (TMAB-01046) at 1:200 overnight at 4°C, followed by conjugation to the secondary antibody and DAB staining.







Application: FCM, ICC/IF, IF, IHC-Fr, IHC-P, WB

Recommended FCM=2 µg/Test; ICC/IF=1:50-200; IF=1:100-500; IHC-Fr=1:100-500; IHC-P=1:100-500; WB=1:500-2000

Properties

Stability & Storage: Store at -20°C or -80°C for 12 months. Avoid repeated freeze-thaw cycles.

Shipping: Shipping with blue ice.

Antigen Details

Immunogen:	KLH conjugated synthetic peptide: human LAMP-1
Antigen Species:	Human
Gene ID:	3916
Uniprot ID:	P11279
Synonyms:	lysosomal-associated membrane protein 1
Biology Area:	Signal Transduction, Autophagy, Autophagy and mitophagy, SARS Coronavirus, Growth Cone, Soma marker, Neurogenesis, lamp1, Organelle Proteins, B Lymphocytic Lineage, T Lymphocytic Lineage, Monocytic Lineage, Lysosome

Research Background

Lysosome associated membrane protein (LAMP1), also known as lgp120 or lgpA, is a type 1 integral membrane protein that is transported from trans Golgi networks to endosomes and then lysosomes. Upon cell activation, LAMP1 transfer to the plasma membrane is dependent on a carboxyl terminal tyrosine based motif (YXXI). Perturbation in the spacing between the tyrosine based motif relative to the membrane abolishes lysosome localization of LAMP1. This mutant protein then cycles between the plasma membrane and the endosome. Cell surface LAMP1 and LAMP2 have been shown to promote adhesion of human peripheral blood mononuclear cells (PBMC) to vascular endothelium, therefore they are possibly involved in the adhesion of PBMCs to the site of

Inhibitor · Natural Compounds · Compound Libraries · Recombinant Proteins

This product is for Research Use Only · Not for Human or Veterinary or Therapeutic Use

Tel: 781-999-4286 E_mail: info@targetmol.com Address: 34 Washington Street, Wellesley Hills, MA 02481