

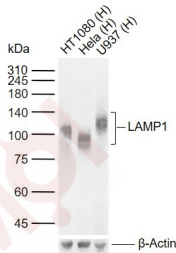
Anti-LAMP1 Antibody (3R897)

Product Details

Ig Type:	IgG1, κ
Reactivity:	Human
Molecular Weight:	Theoretical: 42 kDa. Actual: 80-110 kDa.
Clone:	3R897
Purification:	Protein G purified

Applications

Verified Activity:	Sample:
	Lane 1: Human HT1080 cell lysates
	Lane 2: Human Hela cell lysates
	Lane 3: Human U937 cell lysates
	Primary: Anti-LAMP1 (TMAB-01045) at 1/1000 dilution
	Secondary: IRDye800CW Goat Anti-Mouse IgG at 1/20000 dilution
	Predicted band size: 42 kDa
	Observed band size: 90-120 kDa



Application:	ELISA,FCM,ICC/IF,IF,IHC-Fr,IHC-P,WB
Recommended	WB=1:500-1000,IHC-P=1:100-500,ICC/IF=1:50-200,ELISA=1:5000-10000,IHC-F=1:100-500,IF=1:100-500,Flow-Cyt=1:100-200

Properties

Stability & Storage:	Store at -20°C or -80°C for 12 months. Avoid repeated freeze-thaw cycles.
Shipping:	Shipping with blue ice.

Antigen Details

Immunogen:	KLH conjugated synthetic peptide: human LAMP1
Antigen Species:	Human
Gene ID:	3916
Uniprot ID:	P11279
Synonyms:	lysosomal-associated membrane protein 1
Biology Area:	Signal Transduction,Autophagy,Autophagy and mitophagy,SARS Coronavirus,Growth Cone, Soma marker,Neurogenesis,lamp1,Organelle Proteins,B Lymphocytic Lineage,T Lymphocytic Lineage,Monocytic Lineage,Lysosome

Research Background

Lysosome associated membrane protein (LAMP1), also known as lgp120 or lgpA, is a type 1 integral membrane protein that is transported from trans Golgi networks to endosomes and then lysosomes. Upon cell activation, LAMP1 transfer to the plasma membrane is dependent on a carboxyl terminal tyrosine based motif (YXXI). Perturbation in the spacing between the tyrosine based motif relative to the membrane abolishes lysosome localization of LAMP1. This mutant protein then cycles between the plasma membrane and the endosome. Cell surface LAMP1 and LAMP2 have been shown to promote adhesion of human peripheral blood mononuclear cells (PBMC) to vascular endothelium, therefore they are possibly involved in the adhesion of PBMCs to the site of

Inhibitor · Natural Compounds · Compound Libraries · Recombinant Proteins

This product is for Research Use Only · Not for Human or Veterinary or Therapeutic Use

Tel:781-999-4286 E_mail:info@targetmol.com Address:34 Washington Street,Wellesley Hills,MA 02481