

Anti-Laminin 5 Polyclonal Antibody

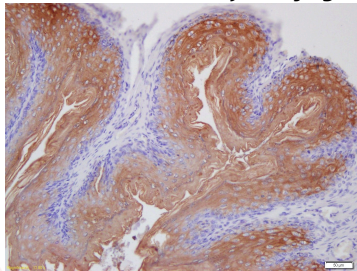
Product Details

Ig Type:	IgG
Reactivity:	Mouse (predicted:Human,Rat,Dog,Pig,Cow,Horse,Rabbit)
Molecular Weight:	Theoretical: 367 kDa.
Purification:	Protein A purified

Applications

Verified Activity:

Tissue/cell: mouse stomach wall; 4% Paraformaldehyde-fixed and paraffin-embedded; Antigen retrieval: citrate buffer (0.01M, pH6.0), Boiling bathing for 15 min; Block endogenous peroxidase by 3% Hydrogen peroxide for 30 min; Blocking buffer (normal goat serum) at 37°C for 20 min; Incubation: Anti-Laminin 5 Polyclonal Antibody, Unconjugated (TMAB-01043) 1:200, overnight at 4°C, followed by conjugation to the secondary antibody and DAb staining.



Application:	IF,IHC-Fr,IHC-P
Recommended	IHC-P: 1:100-500; IHC-Fr: 1:100-500; IF: 1:100-500

Properties

Stability & Storage:	Store at -20°C or -80°C for 12 months. Avoid repeated freeze-thaw cycles.
Shipping:	Shipping with blue ice.

Antigen Details

Immunogen:	KLH conjugated synthetic peptide: human LAMA3
Antigen Species:	Human
Gene ID:	3909
Uniprot ID:	Q16787
Synonyms:	Laminin subunit alpha-3;Epiligrin subunit alpha;LAMA3;laminin alpha3;LAMNA;Laminin-7 subunit alpha;Epiligrin 170 kDa subunit;Laminin5 alpha3;Laminin-6 subunit alpha;laminin5 alpha 3;Laminin-5 subunit alpha;LAMA3A;Kalinin subunit alpha;LOCS;Nicein subunit alpha;laminin alpha 3;Laminin A3;E170;Laminin 5 alpha3
Biology Area:	Extracellular matrix,Extracellular Matrix,Intermediate Filaments,ECM Proteins,Basal Lamina

Research Background

Laminins are basement membrane components thought to mediate the attachment, migration and organization of cells into tissues during embryonic development by interacting with other extracellular matrix components. Laminin 5 is an isoform composed of three distinct subunits, alpha 3, beta 3 and gamma 2, which are bound to each other in a cross-shaped molecule by disulphide bonds. It is a complex glycoprotein thought to be involved in cell adhesion via integrin alpha-3/beta-1 in focal adhesion and integrin alpha-6/beta-4 in hemidesmosomes. It is also involved in signal transduction via tyrosine phosphorylation of pp125-FAK and p80, and differentiation of keratinocytes. The laminin alpha 3 subunit is also thought to be a component of laminin 6 and laminin 7

Inhibitor · Natural Compounds · Compound Libraries · Recombinant Proteins

This product is for Research Use Only· Not for Human or Veterinary or Therapeutic Use

Tel:781-999-4286 E_mail:info@targetmol.com Address:34 Washington Street,Wellesley Hills,MA 02481