

Anti-LAG3 Polyclonal Antibody

Product Details

Ig Type: IgG
Reactivity: Mouse (predicted:Human,Rat,Pig,Cow,Horse,Rabbit)
Molecular Weight: Theoretical: 58 kDa. Actual: 70 kDa.
Purification: Protein A purified

Applications

Verified Activity:

1. Blank control: CtlL-2. Primary Antibody (green line): Rabbit Anti-LAG-3 antibody (TMAB-01042)

Dilution: 1 µg/Test;

Secondary Antibody: Goat anti-rabbit IgG-FITC

Dilution: 0.5 µg/Test.

Protocol

The cells were incubated in 5% BSA to block non-specific protein-protein interactions for 30 min at room temperature. Cells stained with Primary Antibody for 30 min at room temperature. The secondary antibody used for 40 min at room temperature.

2. Blank control: CtlL-2. Primary Antibody (green line): Rabbit Anti-LAG-3 antibody (TMAB-01042)

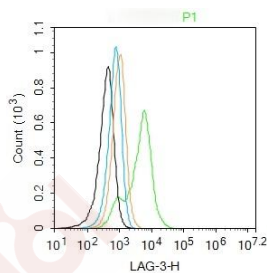
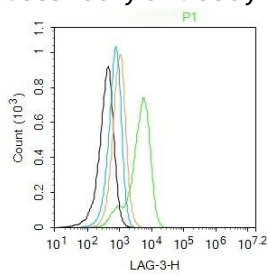
Dilution: 1 µg/Test;

Secondary Antibody: Goat anti-rabbit IgG-FITC

Dilution: 0.5 µg/Test.

Protocol

The cells were incubated in 5% BSA to block non-specific protein-protein interactions for 30 min at room temperature. Cells stained with Primary Antibody for 30 min at room temperature. The secondary antibody used for 40 min at room temperature.



Application: FCM

Recommended FCM: 1µg /test

A DRUG SCREENING EXPERT

Properties

Stability & Storage: Store at -20°C or -80°C for 12 months. Avoid repeated freeze-thaw cycles.

Shipping: Shipping with blue ice.

Antigen Details

Immunogen: KLH conjugated synthetic peptide: human LAG-3

Antigen Species: Human

Gene ID: 3902

Uniprot ID: P18627

Synonyms: LAG-3;CD223;lymphocyte-activation gene 3

Biology Area: Regulatory T Cells,CD,NK Cells,Other secreted molecules

Research Background

Lymphocyte-activation protein 3 belongs to Ig superfamily and contains 4 extracellular Ig-like domains. The LAG3 gene contains 8 exons. The sequence data, exon/intron organization, and chromosomal localization all indicate a close relationship of LAG3 to CD4. [provided by RefSeq, Jul 2008]

Inhibitor · Natural Compounds · Compound Libraries · Recombinant Proteins

This product is for Research Use Only · Not for Human or Veterinary or Therapeutic Use

Tel:781-999-4286 E_mail:info@targetmol.com Address:34 Washington Street,Wellesley Hills,MA 02481