

Anti-KRT19 Polyclonal Antibody

Product Details

Ig Type:	IgG
Reactivity:	Human (predicted:Mouse,Rat,Chicken,Dog,Pig,Cow,Horse,Rabbit)
Molecular Weight:	Theoretical: 44 kDa. Actual: 42 kDa.
Purification:	Protein A purified

Applications

1. Paraformaldehyde-fixed, paraffin embedded (Human liver carcinoma); Antigen retrieval by microwave in sodium citrate buffer (pH6.0); Block endogenous peroxidase by 3% hydrogen peroxide for 30 minutes; Blocking buffer (3% BSA) at RT for 30 min; Antibody incubation with (Cytokeratin 19) Polyclonal Antibody, Unconjugated (TMAB-01039) at 1:400 overnight at 4°C, followed by conjugation to the secondary antibody (labeled with HRP) and DAB staining.

2. Blank control (blue): MCF7 (fixed with 2% paraformaldehyde (10 min) and then permeabilized with ice-cold 90% methanol for 30 min on ice). Primary Antibody: Rabbit Anti-Cytokeratin 19/FITC Conjugated antibody (TMAB-01039/FITC), Dilution: 1 µg in 100 µL 1X PBS containing 0.5% BSA;

Isotype Control Antibody: Rabbit IgG/FITC (orange), used under the same conditions.

3. Blank control (blue line): Hela (fixed with 70% methanol (Overnight at 4°C) and then permeabilized with 90% ice-cold methanol for 20 min at -20°C).

Primary Antibody (green line): Rabbit Anti-Cytokeratin 19 antibody (TMAB-01039), Dilution: 1 µg/10⁶ cells;

Isotype Control Antibody (orange line): Rabbit IgG.

Secondary Antibody (white blue line): Goat anti-rabbit IgG-PE, Dilution: 1 µg/test.

4. Blank control: A549. Primary Antibody (green line): Rabbit Anti-Cytokeratin 19 antibody (TMAB-01039)

Dilution: 2 µg/10⁶ cells;

Isotype Control Antibody (orange line): Rabbit IgG.

Secondary Antibody: Goat anti-rabbit IgG-AF647

Dilution: 1 µg/test.

Protocol

The cells were fixed with 4% PFA (10 min at room temperature) and then permeabilized with 0.1% PBST for 20 min at room temperature. The cells were then incubated in 5% BSA to block non-specific protein-protein interactions for 30 min at room temperature. Cells stained with Primary Antibody for 30 min at room temperature. The secondary antibody used for 40 min at room temperature.

5. Sample:

Lane 1: A549 (Human) Cell Lysate at 30 µg

Lane 2: MCF-7 (Human) Cell Lysate at 30 µg

Lane 3: HepG2 (Human) Cell Lysate at 30 µg

Primary: Anti-Cytokeratin 19 (TMAB-01039) at 1/1000 dilution

Secondary: IRDye800CW Goat Anti-Rabbit IgG at 1/20000 dilution

Predicted band size: 42 kDa

Observed band size: 42 kDa

6. Blank control: MCF-7. Primary Antibody (green line): Rabbit Anti-Cytokeratin 19 antibody (TMAB-01039)

Verified Activity:

Dilution: 1 µg/Test;

Secondary Antibody: Goat anti-rabbit IgG-FITC

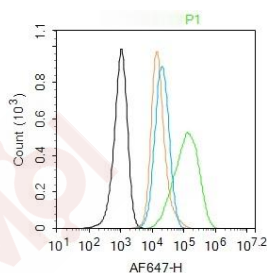
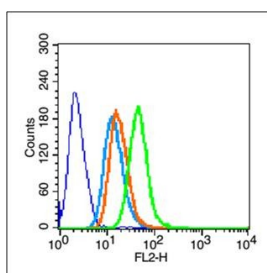
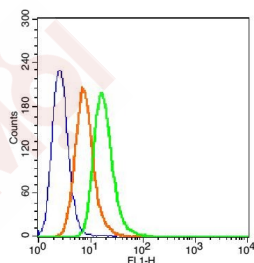
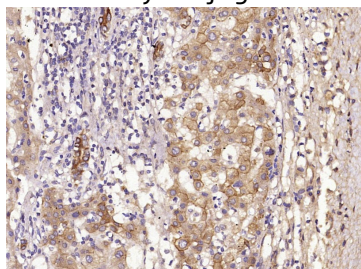
Dilution: 0.5 µg/Test.

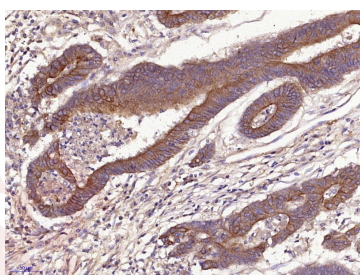
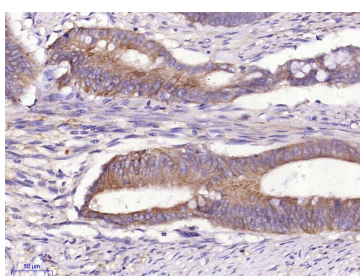
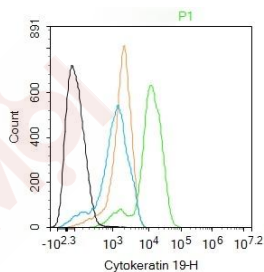
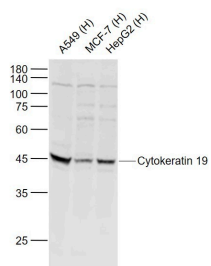
Protocol

The cells were fixed with 4% PFA (10 min at room temperature) and then permeabilized with 90% ice-cold methanol for 20 min at -20°C. The cells were then incubated in 5% BSA to block non-specific protein-protein interactions for 30 min at room temperature. Cells stained with Primary Antibody for 30 min at room temperature. The secondary antibody used for 40 min at room temperature.

7. Paraformaldehyde-fixed, paraffin embedded (Human cervical carcinoma); Antigen retrieval by microwave in sodium citrate buffer (pH6.0); Block endogenous peroxidase by 3% hydrogen peroxide for 30 minutes; Blocking buffer (3% BSA) at RT for 30 min; Antibody incubation with (Cytokeratin 19) Polyclonal Antibody, Unconjugated (TMAB-01039) at 1:400 overnight at 4°C, followed by conjugation to the secondary antibody (labeled with HRP) and DAB staining.

8. Paraformaldehyde-fixed, paraffin embedded (Human stomach carcinoma); Antigen retrieval by microwave in sodium citrate buffer (pH6.0); Block endogenous peroxidase by 3% hydrogen peroxide for 30 minutes; Blocking buffer (3% BSA) at RT for 30 min; Antibody incubation with (Cytokeratin 19) Polyclonal Antibody, Unconjugated (TMAB-01039) at 1:400 overnight at 4°C, followed by conjugation to the secondary antibody (labeled with HRP) and DAB staining.





Application: FCM,IF,IHC-Fr,IHC-P,WB

Recommended WB: 1:500-2000; IHC-P: 1:100-500; IHC-Fr: 1:100-500; IF: 1:100-500; FCM: 1µg /test

Properties

Stability & Storage: Store at -20°C or -80°C for 12 months. Avoid repeated freeze-thaw cycles.

Shipping: Shipping with blue ice.

Antigen Details

Immunogen: KLH conjugated synthetic peptide: human Cytokeratin 19.

Antigen Species: Human

Gene ID: 3880

Uniprot ID: P08727

Synonyms: Keratin, type I cytoskeletal 19;Cytokeratin-19 (CK-19);type I cytoskeletal 19;Keratin-19 (K19); KRT19

Biology Area: Cytokeratins

Research Background

The protein encoded by this gene is a member of the keratin family. The keratins are intermediate filament proteins responsible for the structural integrity of epithelial cells and are subdivided into cytokeratins and hair keratins. The type I cytokeratins consist of acidic proteins which are arranged in pairs of heterotypic keratin chains. Unlike its related family members, this smallest known acidic cytokeratin is not paired with a basic cytokeratin in epithelial cells. It is specifically expressed in the periderm, the transiently superficial layer that envelops the developing epidermis. The type I cytokeratins are clustered in a region of chromosome 17q12-q21.

Inhibitor · Natural Compounds · Compound Libraries · Recombinant Proteins

This product is for Research Use Only · Not for Human or Veterinary or Therapeutic Use

Tel:781-999-4286 E_mail:info@targetmol.com Address:34 Washington Street,Wellesley Hills,MA 02481