

## Anti-KRT18 Polyclonal Antibody 2

### Product Details

Ig Type:	IgG
Reactivity:	Human,Mouse,Rat(predicted:Chicken,Dog,Rabbit)
Molecular Weight:	Theoretical: 48 kDa. Actual: 45-48 kDa.
Purification:	Protein A purified

### Applications

#### 1. Sample:

Hela KO CK18 (Human) Cell Lysate at 30 µg

Hela (Human) Cell Lysate at 30 µg

Primary: Anti-CK18 (TMAB-01037) at 1/1000 dilution

Secondary: IRDye800CW Goat Anti-Rabbit IgG at 1/20000 dilution

Predicted band size: 48 kDa

Observed band size: 48 kDa

#### 2. Sample:

Lane 1: Hela (Human) Cell Lysate at 30 µg

Lane 2: HepG2 (Human) Cell Lysate at 30 µg

Lane 3: A549 (Human) Cell Lysate at 30 µg

Lane 4: MCF-7 (Human) Cell Lysate at 30 µg

Primary: Anti-CK18 (TMAB-01037) at 1/1000 dilution

Secondary: IRDye800CW Goat Anti-Rabbit IgG at 1/20000 dilution

Predicted band size: 48 kDa

Observed band size: 45 kDa

#### 3. Blank control: Hela.

Primary Antibody (green line): Rabbit Anti-CK18 antibody (TMAB-01037)

Dilution: 1 µg/10<sup>6</sup> cells;

Isotype Control Antibody (orange line): Rabbit IgG.

Secondary Antibody: Goat anti-rabbit IgG-AF647

Dilution: 1 µg/test.

#### Protocol

The cells were fixed with 4% PFA (10 min at room temperature) and then permeabilized with 0.1% PBST for 20 min at -20°C. The cells were then incubated in 5% BSA to block non-specific protein-protein interactions for 30 min at room temperature. Cells stained with Primary Antibody for 30 min at room temperature. The secondary antibody used for 40 min at room temperature.

4. Paraformaldehyde-fixed, paraffin embedded Human Pancreatic Cancer; Antigen retrieval by boiling in sodium citrate buffer (pH6.0) for 15 min; Antibody incubation with CK18 Polyclonal Antibody, Unconjugated (TMAB-01037) at 1:200 overnight at 4°C, followed by conjugation to the SP Kit (Rabbit) and DAB staining.

5. Paraformaldehyde-fixed, paraffin embedded Rat Uterus; Antigen retrieval by boiling in sodium citrate buffer (pH6.0) for 15 min; Antibody incubation with CK18 Polyclonal Antibody, Unconjugated (TMAB-01037) at 1:200 overnight at 4°C, followed by conjugation to the SP Kit (Rabbit) and DAB staining.

6. Tissue/cell: A549 cell; 4% Paraformaldehyde-fixed; Triton X-100 at room temperature for 20 min; Blocking buffer (normal goat serum) at 37°C for 20 min; Antibody incubation with (CK18)

Verified Activity:

polyclonal Antibody, Unconjugated (TMAB-01037) 1:100, 90 minutes at 37°C; followed by a FITC conjugated Goat Anti-Rabbit IgG antibody at 37°C for 90 minutes, DAPI (blue) was used to stain the cell nucleus.

7. Paraformaldehyde-fixed, paraffin embedded Human Lung Cancer; Antigen retrieval by boiling in sodium citrate buffer (pH6.0) for 15 min; Antibody incubation with CK18 Polyclonal Antibody, Unconjugated (TMAB-01037) at 1:200 overnight at 4°C, followed by conjugation to the SP Kit (Rabbit) and DAB staining.

8. Blank control (blue line): HepG2 (blue).

Primary Antibody (green line): Rabbit Anti-CK18 antibody (TMAB-01037)

Dilution: 0.2 µg/10<sup>6</sup> cells;

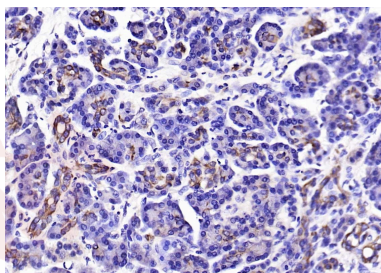
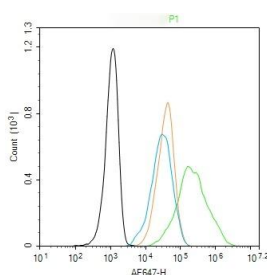
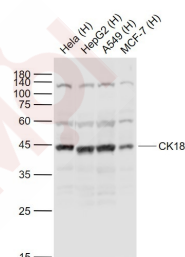
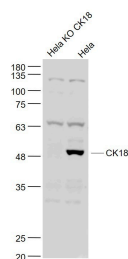
Isotype Control Antibody (orange line): Rabbit IgG.

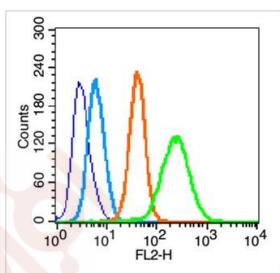
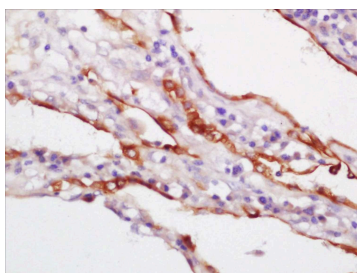
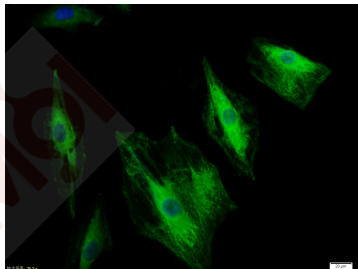
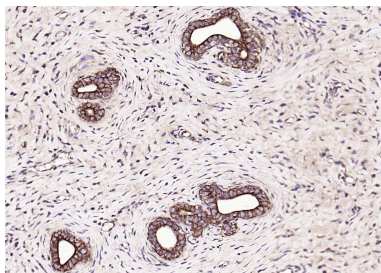
Secondary Antibody (white blue line): Goat anti-rabbit IgG-PE

Dilution: 1 µg/test.

Protocol

The cells were fixed with 70% ethanol (Overnight at 4°C) and then permeabilized with 90% methanol for 20 min at -20°C. Cells stained with Primary Antibody for 30 min at room temperature. The cells were then incubated in 1 X PBS/2% BSA/10% goat serum to block non-specific protein-protein interactions followed by the antibody for 15 min at room temperature. The secondary antibody used for 40 min at room temperature.





Application: FCM,ICC/IF,IF,IHC-Fr,IHC-P,WB

Recommended FCM=0.2 µg/Test; ICC/IF=1:100-500; IF=1:100-500; IHC-Fr=1:100-500; IHC-P=1:100-500; WB=1:500-2000

### Properties

Stability & Storage: Store at -20°C or -80°C for 12 months. Avoid repeated freeze-thaw cycles.

Shipping: Shipping with blue ice.

### Antigen Details

Immunogen: KLH conjugated synthetic peptide: human CK18

Antigen Species: Human

Gene ID: 3875

Uniprot ID: P05783

Synonyms: type I cytoskeletal 18;CYK18;KRT18;Keratin-18 (K18);Keratin, type I cytoskeletal 18;Cytokeratin-18 (CK-18);Cell proliferation-inducing gene 46 protein

Biology Area: Cytokeratins,Tumor Associated

Research Background

KRT18 encodes the type I intermediate filament chain keratin 18. Keratin 18, together with its filament partner keratin 8, are perhaps the most commonly found members of the intermediate filament gene family. They are expressed in single layer epithelial tissues of the body. Mutations in this gene have been linked to cryptogenic cirrhosis. Two transcript variants encoding the same protein have been found for this gene. [provided by RefSeq, Jul

**Inhibitor · Natural Compounds · Compound Libraries · Recombinant Proteins**

This product is for Research Use Only · Not for Human or Veterinary or Therapeutic Use

Tel:781-999-4286 E\_mail:info@targetmol.com Address:34 Washington Street,Wellesley Hills,MA 02481