

Anti-Kremen-2 Polyclonal Antibody

Product Details

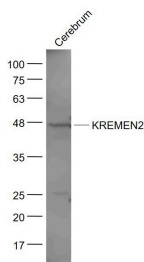
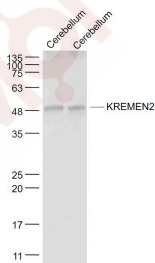
Ig Type: IgG
Reactivity: Mouse,Rat (predicted:Human,Dog,Sheep)
Molecular Weight: Theoretical: 46 kDa. Actual: 48 kDa.
Purification: Protein A purified

Applications

1. Sample:
Cerebellum (Mouse) Lysate at 40 µg
Cerebellum (Rat) Lysate at 40 µg
Primary: Anti-KREMEN2 (TMAB-01035) at 1/1000 dilution
Secondary: IRDye800CW Goat Anti-Rabbit IgG at 1/20000 dilution
Predicted band size: 46 kDa
Observed band size: 48 kDa

2. Sample:
Cerebrum (Mouse) Lysate at 40 µg
Primary: Anti-KREMEN2 (TMAB-01035) at 1/300 dilution
Secondary: IRDye800CW Goat Anti-Rabbit IgG at 1/20000 dilution
Predicted band size: 46 kDa
Observed band size: 46 kDa

Verified Activity:



Application: WB
Recommended WB: 1:500-2000

Properties

Stability & Storage: Store at -20°C or -80°C for 12 months. Avoid repeated freeze-thaw cycles.

Shipping: Shipping with blue ice.

Antigen Details

Immunogen: KLH conjugated synthetic peptide: human KREMEN2

Antigen Species: Human

Gene ID: 79412

Uniprot ID: Q8NCW0

Synonyms: KREMEN2;Kremen-2;Dickkopf receptor 2;KRM2

Research Background

This gene encodes a high-affinity dickkopf homolog 1 (DKK1) transmembrane receptor. A similar protein in mouse functions interacts with with DKK1 to block wingless (WNT)/beta-catenin signaling. The encoded protein forms a ternary membrane complex with DKK1 and the WNT receptor lipoprotein receptor-related protein 6 (LRP6), and induces rapid endocytosis and removal of LRP6 from the plasma membrane. It contains extracellular kringle, WSC, and CUB domains. Alternatively spliced transcript variants encoding distinct isoforms have been observed for this gene. [provided by RefSeq, Dec 2011]

Inhibitor · Natural Compounds · Compound Libraries · Recombinant Proteins

This product is for Research Use Only · Not for Human or Veterinary or Therapeutic Use

Tel:781-999-4286 E_mail:info@targetmol.com Address:34 Washington Street,Wellesley Hills,MA 02481