

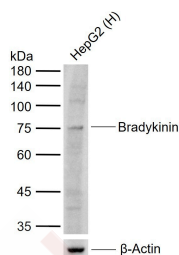
Anti-KNG1 Polyclonal Antibody

Product Details

Ig Type:	IgG
Reactivity:	Human (predicted:Mouse,Rat,Dog,Pig,Cow,Horse,Rabbit,Sheep)
Molecular Weight:	Theoretical: 1.5/28/41/70 kDa. Actual: 75 kDa.
Purification:	Protein A purified

Applications

Sample:	Lane 1: Human HepG2 cell lysates
Verified Activity:	Primary: Anti-Bradykinin (TMAB-01033) at 1/1000 dilution Secondary: IRDye800CW Goat Anti-Rabbit IgG at 1/20000 dilution Predicted band size: 1.5/28/41/70 kDa Observed band size: 75 kDa



Application:	WB
Recommended	WB: 1:500-2000

Properties

Stability & Storage:	Store at -20°C or -80°C for 12 months. Avoid repeated freeze-thaw cycles.
Shipping:	Shipping with blue ice.

Antigen Details

Immunogen:	KLH conjugated synthetic peptide: human Kininogen 1
Antigen Species:	Human
Gene ID:	3827
Uniprot ID:	P01042
Synonyms:	KNG1;Williams-Fitzgerald-Flaujeac Factor;BDK;lpha-2-Thiol Proteinase Inhibitor;HMWK;High Molecular Weight Kininogen;Kininogen-1;Fitzgerald Factor;KNG

Research Background

This gene uses alternative splicing to generate two different proteins- high molecular weight kininogen (HMWK) and low molecular weight kininogen (LMWK). HMWK is essential for blood coagulation and assembly of the kallikrein-kinin system. Also, bradykinin, a peptide causing numerous physiological effects, is released from HMWK. In contrast to HMWK, LMWK is not involved in blood coagulation. Three transcript variants encoding different isoforms have

been found for this gene.[provided by RefSeq, Oct 2009].

Inhibitor · Natural Compounds · Compound Libraries · Recombinant Proteins

This product is for Research Use Only · Not for Human or Veterinary or Therapeutic Use

Tel:781-999-4286 E_mail:info@targetmol.com Address:34 Washington Street,Wellesley Hills,MA 02481