

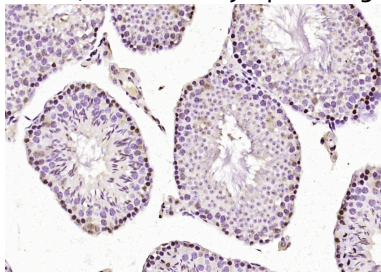
Anti-KMT2C Polyclonal Antibody

Product Details

Ig Type:	IgG
Reactivity:	Mouse (predicted:Human,Rat,Pig)
Molecular Weight:	Theoretical: 541 kDa.
Purification:	Protein A purified

Applications

Verified Activity: Paraformaldehyde-fixed, paraffin embedded (mouse testis tissue); Antigen retrieval by boiling in sodium citrate buffer (pH6.0) for 15 min; Block endogenous peroxidase by 3% hydrogen peroxide for 20 min; Blocking buffer (normal goat serum) at 37°C for 30 min; Antibody incubation with (KMT2C) Polyclonal Antibody, Unconjugated (TMAB-01032) at 1:200 overnight at 4°C, followed by operating according to SP Kit (Rabbit) instructions and DAB staining.



Application:	IF,IHC-Fr,IHC-P
Recommended	IHC-P: 1:100-500; IHC-Fr: 1:100-500; IF: 1:100-500

Properties

Stability & Storage:	Store at -20°C or -80°C for 12 months. Avoid repeated freeze-thaw cycles.
Shipping:	Shipping with blue ice.

Antigen Details

Immunogen:	KLH conjugated synthetic peptide: human KMT2C
Antigen Species:	Human
Gene ID:	58508
Uniprot ID:	Q8NEZ4
Synonyms:	Histone-lysine N-methyltransferase MLL3;KMT2C;Homologous to ALR protein;Lysine N-methyltransferase 2C;MLL3;Myeloid/lymphoid or mixed-lineage leukemia protein 3; Myeloid/lymphoid or mixed-lineage leukemia protein 3 homolog

Research Background

This gene is a member of the myeloid/lymphoid or mixed-lineage leukemia (MLL) family and encodes a nuclear protein with an AT hook DNA-binding domain, a DHHC-type zinc finger, six PHD-type zinc fingers, a SET domain, a post-SET domain and a RING-type zinc finger. This protein is a member of the ASC-2/NCOA6 complex (ASCOM), which possesses histone methylation activity and is involved in transcriptional coactivation. [provided by RefSeq, Jul

2008]

Inhibitor · Natural Compounds · Compound Libraries · Recombinant Proteins

This product is for Research Use Only · Not for Human or Veterinary or Therapeutic Use

Tel:781-999-4286 E_mail:info@targetmol.com Address:34 Washington Street,Wellesley Hills,MA 02481