

Anti-Klrb1c Polyclonal Antibody

Product Details

Ig Type: IgG
Reactivity: Mouse,Rat
Molecular Weight: Theoretical: 25 kDa. Actual: 48 kDa.
Purification: Protein A purified

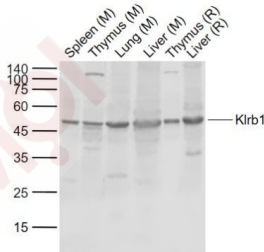
Applications

Sample:

Lane 1: Mouse Spleen tissue lysates
Lane 2: Mouse Thymus tissue lysates
Lane 3: Mouse Lung tissue lysates
Lane 4: Mouse Liver tissue lysates

Verified Activity:

Lane 5: Rat Thymus tissue lysates
Lane 6: Rat Liver tissue lysates
Primary: Anti-Klrb1 (TMAB-01031) at 1/1000 dilution
Secondary: IRDye800CW Goat Anti-Rabbit IgG at 1/20000 dilution
Predicted band size: 25 kDa
Observed band size: 48 kDa



Application: WB
Recommended WB: 1:500-2000

Properties

Stability & Storage: Store at -20°C or -80°C for 12 months. Avoid repeated freeze-thaw cycles.
Shipping: Shipping with blue ice.

Antigen Details

| | |
|------------------|--|
| Immunogen: | KLH conjugated synthetic peptide: mouse CD161c/NK1.1 |
| Antigen Species: | Mouse |
| Gene ID: | 17059 |
| Uniprot ID: | P27814 |
| Synonyms: | CD161c;NK1.1;Ly55c;Natural killer cell surface protein P1-40;NKR-P1C;Lymphocyte antigen 55c;Killer cell lectin-like receptor subfamily B member 1C;Nkrp1c;CD161 antigen-like family member C;NKR-P1.9;NKR-P1 40;KLRBC_MOUSE;Ly-55c;Killer cell lectin-like receptor subfamily B member 1 |
| Biology Area: | NK Cells,NK Cell Lineage,T Lymphocytic Lineage |

Research Background

Enables identical protein binding activity and signaling receptor activity. Acts upstream of or within natural killer cell activation and positive regulation of natural killer cell mediated cytotoxicity. Located in external side of plasma membrane. Is integral component of plasma membrane. Is expressed in thymus primordium. Orthologous to human KLRB1 (killer cell lectin like receptor B1). [provided by Alliance of Genome Resources, Apr 2022]

Inhibitor · Natural Compounds · Compound Libraries · Recombinant Proteins

This product is for Research Use Only · Not for Human or Veterinary or Therapeutic Use

Tel:781-999-4286 E_mail:info@targetmol.com Address:34 Washington Street,Wellesley Hills,MA 02481