

## Anti-KLK10 Polyclonal Antibody

### Product Details

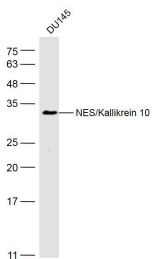
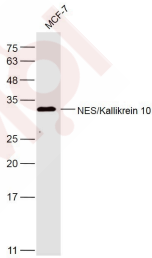
Ig Type: IgG  
Reactivity: Human (predicted:Mouse,Rat,Cow)  
Molecular Weight: Theoretical: 31 kDa. Actual: 31 kDa.  
Purification: Protein A purified

### Applications

1. Sample:  
MCF-7 (Human) Cell Lysate at 30 µg  
Primary: Anti-NES/Kallikrein 10 (TMAB-01029) at 1/300 dilution  
Secondary: IRDye800CW Goat Anti-Rabbit IgG at 1/20000 dilution  
Predicted band size: 31 kDa  
Observed band size: 31 kDa

Verified Activity:

2. Sample:  
DU145 (Human) Cell Lysate at 30 µg  
Primary: Anti-NES/Kallikrein 10 (TMAB-01029) at 1/300 dilution  
Secondary: IRDye800CW Goat Anti-Rabbit IgG at 1/20000 dilution  
Predicted band size: 31 kDa  
Observed band size: 31 kDa



Application: WB  
Recommended WB: 1:500-2000

### Properties

Stability & Storage: Store at -20°C or -80°C for 12 months. Avoid repeated freeze-thaw cycles.

Shipping: Shipping with blue ice.

---

### Antigen Details

Immunogen: KLH conjugated synthetic peptide: human KLK10

Antigen Species: Human

Gene ID: 5655

Uniprot ID: O43240

Synonyms: Protease Serine-Like 1;PRSSL1;NES1;Normal Epithelial Cell-Specific 1;Kallikrein-10;KLK10

---

### Research Background

Kallikrein 10 is a trypsin-like serine proteinase. Originally described from a subtractive library looking for genes that were down-regulated in breast cancer, kallikrein 10 was thought to be epithelial cell specific. Kallikrein 10 is reported to be up regulated in pancreatic cancer and ovarian cancer, but down regulated in testicular cancer and breast cancer, perhaps due to differential hormonal regulation, or tissue specificities. Breast cancer patients that had elevated kallikrein 10 had a worse prognosis, leading to speculation that kallikrein 10 might be protective in breast cancer, similar to the argument put forth for kallikrein 3 in prostate cancer. Kallikrein 10 is found in high levels in the pancreas and in lower levels in the tonsils, esophagus, skin, brain, testis and ovary. Biological fluids (breast milk, serum, seminal plasma, urine) contain kallikrein 10, the highest levels found in milk. The cerebral spinal fluid (CSF) contains Kallikrein 10, and was reported to be elevated in patients with Alzheimer's disease. Endogenous inhibitors include kallistatin, protein-C inhibitor and 1-proteinase inhibitor, although Kallikrein 10 can be found complexed to a number of different proteinase inhibitors.

**Inhibitor · Natural Compounds · Compound Libraries · Recombinant Proteins**

This product is for Research Use Only · Not for Human or Veterinary or Therapeutic Use

Tel:781-999-4286 E\_mail:info@targetmol.com Address:34 Washington Street,Wellesley Hills,MA 02481