

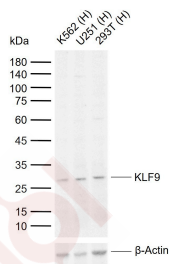
## Anti-KLF9 Polyclonal Antibody

### Product Details

Ig Type: IgG  
Reactivity: Human (predicted:Mouse,Rat)  
Molecular Weight: Theoretical: 27 kDa. Actual: 27 kDa.  
Purification: Protein A purified

### Applications

Sample:  
Lane 1: Human K562 cell lysates  
Lane 2: Human U251 cell lysates  
Lane 3: Human 293T cell lysates  
Verified Activity:  
Primary: Anti-KLF9 (TMAB-01027) at 1/1000 dilution  
Secondary: IRDye800CW Goat Anti-Rabbit IgG at 1/20000 dilution  
Predicted band size: 27 kDa  
Observed band size: 27 kDa



Application: WB  
Recommended WB: 1:500-2000

### Properties

Stability & Storage: Store at -20°C or -80°C for 12 months. Avoid repeated freeze-thaw cycles.  
Shipping: Shipping with blue ice.

### Antigen Details

Immunogen: KLH conjugated synthetic peptide: human KLF9  
Antigen Species: Human  
Gene ID: 687  
Uniprot ID: Q13886  
Synonyms: BTEB1;Transcription factor BTEB1;GC box binding protein 1;Transcription factor BTEB 1;BTEB; Basic transcription element binding protein 1;Krueppel like factor 9;BTE binding protein 1;BTEB 1;KLF 9  
Biology Area: Krueppel like factor,Zinc Finger,Krueppel like factor

Research Background

KLF9 is a transcription factor that binds to GC box promoter elements. It activates mRNA synthesis selectively from genes containing tandem repeats of GC boxes but represses genes with a single GC box. KLF9 belongs to the Sp1 C2H2 type zinc finger protein family.

**Inhibitor · Natural Compounds · Compound Libraries · Recombinant Proteins**

This product is for Research Use Only· Not for Human or Veterinary or Therapeutic Use

Tel:781-999-4286 E\_mail:info@targetmol.com Address:34 Washington Street,Wellesley Hills,MA 02481