

## Anti-KLF2 Polyclonal Antibody

## Product Details

Ig Type:	IgG
Reactivity:	Human,Mouse,Rat (predicted:Pig,Cow,Horse,Rabbit,Sheep)
Molecular Weight:	Theoretical: 37 kDa. Actual: 39 kDa.
Purification:	Protein A purified

## Applications

1. Blank control: A431. Primary Antibody (green line): Rabbit Anti-KLF2 antibody (TMAB-01025)  
 Dilution: 1 µg/10<sup>6</sup> cells;  
 Isotype Control Antibody (orange line): Rabbit IgG.  
 Secondary Antibody: Goat anti-rabbit IgG-AF647  
 Dilution: 1 µg/test.

## Protocol

The cells were fixed with 4% PFA (10 min at room temperature) and then permeabilized with 90% ice-cold methanol for 20 min at -20°C. The cells were then incubated in 5% BSA to block non-specific protein-protein interactions for 30 min at room temperature. Cells stained with Primary Antibody for 30 min at room temperature. The secondary antibody used for 40 min at room temperature.

2. Paraformaldehyde-fixed, paraffin embedded (Rat brain); Antigen retrieval by microwave in sodium citrate buffer (pH6.0); Block endogenous peroxidase by 3% hydrogen peroxide for 30 minutes; Blocking buffer (3% BSA) at RT for 30 min; Antibody incubation with (KLF2) Polyclonal Antibody, Unconjugated (TMAB-01025) at 1:400 overnight at 4°C, followed by conjugation to the secondary antibody (labeled with HRP) and DAB staining.

## Verified Activity:

3. Tissue/cell: Mouse embryos;4% Paraformaldehyde-fixed and paraffin-embedded;  
 Antigen retrieval: citrate buffer (0.01M, pH6.0), Boiling bathing for 15 min; Blocking buffer (normal goat serum) at 37°C for 20 min;  
 Incubation: Anti-KLF2 Polyclonal Antibody, Unconjugated (TMAB-01025) 1:200, overnight at 4°C; The secondary antibody was Goat Anti-Rabbit IgG, Cy3 conjugated used at 1:200 dilution for 40 minutes at 37°C. DAPI (5 µg/ml,blue) was used to stain the cell nucleus.

## 4. Sample:

Lane1: Brain (Mouse) Lysate at 30 µg

Lane2: HepG2 Cell Lysate at 30 µg

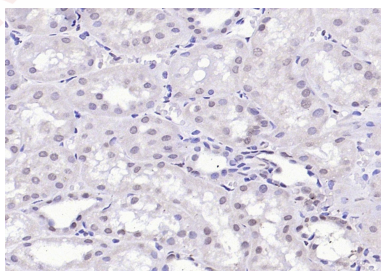
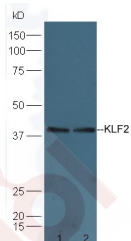
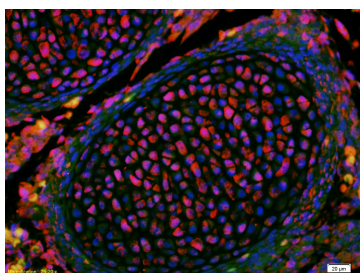
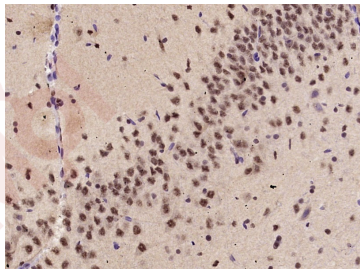
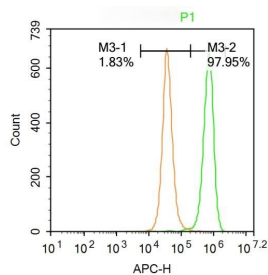
Primary: Anti-KLF2 (TMAB-01025) at 1:300 dilution;

Secondary: HRP conjugated Goat-Anti-Rabbit IgG (bse-0295G-HRP) at 1: 5000 dilution;

Predicted band size:39 kDa

Observed band size:39 kDa

5. Paraformaldehyde-fixed, paraffin embedded (Human kidney); Antigen retrieval by boiling in sodium citrate buffer (pH6.0) for 15 min; Block endogenous peroxidase by 3% hydrogen peroxide for 20 min; Blocking buffer (normal goat serum) at 37°C for 30 min; Antibody incubation with (KLF2) Polyclonal Antibody, Unconjugated (TMAB-01025) at 1:200 overnight at 4°C, followed by operating according to SP Kit (Rabbit) instructions and DAB staining.



Application: FCM,IF,IHC-Fr,IHC-P,WB

Recommended FCM=1  $\mu$ g/Test; IF=1:100-500; IHC-Fr=1:100-500; IHC-P=1:100-500; WB=1:500-2000

### Properties

Stability & Storage: Store at  $-20^{\circ}\text{C}$  or  $-80^{\circ}\text{C}$  for 12 months. Avoid repeated freeze-thaw cycles.

Shipping: Shipping with blue ice.

### Antigen Details

Immunogen:	KLH conjugated synthetic peptide: human KLF2
Antigen Species:	Human
Gene ID:	10365
Uniprot ID:	Q9Y5W3
Synonyms:	Lung krueppel like factor;Lung Kruppel like zinc finger transcription factor;Kruppel-like factor 2 (lung);Krueppel-like factor 2;Kruppel like factor;Lklf;KLF 2;Kruppel like factor LKLF;Kruppel like factor 2
Biology Area:	Angiogenic inhibitory factors,Endothelium,Krueppel like factor,Krueppel like factor

---

### Research Background

Kruppel-like factors (KLFs) are a family of broadly expressed zinc finger transcription factors. KLF2 regulates T-cell trafficking by promoting expression of the lipid-binding receptor S1P1 (S1PR1; MIM 601974) and the selectin CD62L (SELL; MIM 153240) (summary by Weinreich et al., 2009 [PubMed 19592277]).[supplied by OMIM, Feb 2011]

**Inhibitor · Natural Compounds · Compound Libraries · Recombinant Proteins**

This product is for Research Use Only · Not for Human or Veterinary or Therapeutic Use

Tel:781-999-4286 E\_mail:info@targetmol.com Address:34 Washington Street,Wellesley Hills,MA 02481