

Anti-KISS1 Polyclonal Antibody

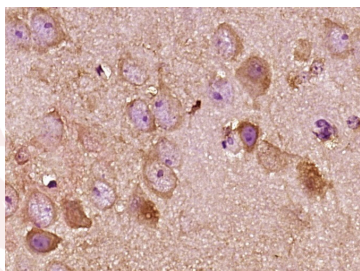
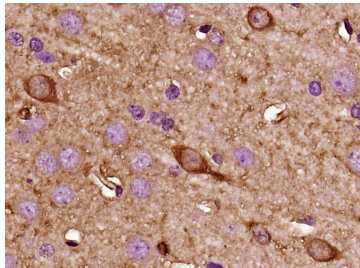
Product Details

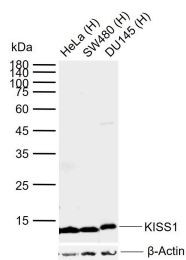
Ig Type:	IgG
Reactivity:	Human, Mouse, Rat (predicted: Cow, Sheep, Pig)
Molecular Weight:	Theoretical: 16 kDa. Actual: 13 kDa.
Purification:	Protein A purified

Applications

Verified Activity:

1. Paraformaldehyde-fixed, paraffin embedded (Rat brain); Antigen retrieval by boiling in sodium citrate buffer (pH6.0) for 15 min; Block endogenous peroxidase by 3% hydrogen peroxide for 20 min; Blocking buffer (normal goat serum) at 37°C for 30 min; Antibody incubation with (Kisspeptin) Polyclonal Antibody, Unconjugated (TMAB-01022) at 1:400 overnight at 4°C, followed by operating according to SP Kit (Rabbit) instructions and DAB staining.
2. Paraformaldehyde-fixed, paraffin embedded (Mouse brain); Antigen retrieval by boiling in sodium citrate buffer (pH6.0) for 15 min; Block endogenous peroxidase by 3% hydrogen peroxide for 20 min; Blocking buffer (normal goat serum) at 37°C for 30 min; Antibody incubation with (Kisspeptin) Polyclonal Antibody, Unconjugated (TMAB-01022) at 1:400 overnight at 4°C, followed by operating according to SP Kit (Rabbit) instructions and DAB staining.
3. Sample:
 - Lane 1: Human HeLa cell lysates
 - Lane 2: Human SW480 cell lysates
 - Lane 3: Human DU145 cell lysates
 - Primary: Anti-KISS1 (TMAB-01022) at 1/1000 dilution
 - Secondary: IRDye800CW Goat Anti-Rabbit IgG at 1/20000 dilution
 - Predicted band size: 16 kDa
 - Observed band size: 13 kDa





Application: IF,IHC-Fr,IHC-P,WB

Recommended WB: 1:500-2000; IHC-P: 1:100-500; IHC-Fr: 1:100-500; IF: 1:100-500

Properties

Stability & Storage: Store at -20°C or -80°C for 12 months. Avoid repeated freeze-thaw cycles.

Shipping: Shipping with blue ice.

Antigen Details

Immunogen: KLH conjugated synthetic peptide: human Kiss-1

Antigen Species: Human

Gene ID: 3814

Uniprot ID: Q15726

Synonyms: Kisspeptin-13;Kisspeptin-10;Metastasis-suppressor KiSS-1;Kisspeptin-1;PP5098;Kisspeptin-54;Metastin;Kisspeptin-14;KISS1;Kisspeptin

Biology Area: Cell cycle inhibitors,Cell Cycle Inhibitors,Tumor Suppressors,Gonadotrophic axis

Research Background

This gene is a metastasis suppressor gene that suppresses metastases of melanomas and breast carcinomas without affecting tumorigenicity. The encoded protein may inhibit chemotaxis and invasion and thereby attenuate metastasis in malignant melanomas. Studies suggest a putative role in the regulation of events downstream of cell-matrix adhesion, perhaps involving cytoskeletal reorganization. A protein product of this gene, kisspeptin, stimulates gonadotropin-releasing hormone (GnRH)-induced gonadotropin secretion and regulates the pubertal activation of GnRH neurons. A polymorphism in the terminal exon of this mRNA results in two protein isoforms. An adenosine present at the polymorphic site represents the third position in a stop codon. When the adenosine is absent, a downstream stop codon is utilized and the encoded protein extends for an additional seven amino acid residues. [provided by RefSeq, Mar 2012]

Inhibitor · Natural Compounds · Compound Libraries · Recombinant Proteins

This product is for Research Use Only · Not for Human or Veterinary or Therapeutic Use

Tel:781-999-4286 E_mail:info@targetmol.com Address:34 Washington Street,Wellesley Hills,MA 02481