

## Anti-IL-25/IL-17E Polyclonal Antibody

### Product Details

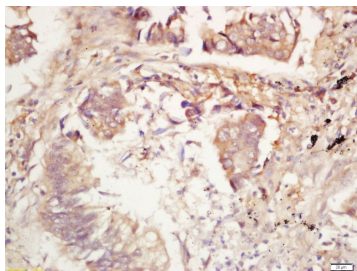
Ig Type:	IgG
Reactivity:	Human, Mouse (predicted: Rat, Cow, Horse, Rabbit, Sheep)
Molecular Weight:	Theoretical: 17 kDa. Actual: 17 kDa.
Purification:	Protein A purified

### Applications

1. Protein: spleen (mouse) lysate at 30 µg;  
Primary: rabbit Anti-IL17E (TMAB-00957) at 1:300;  
Secondary: HRP conjugated Goat-Anti-rabbit IgG (secondary antibody) at 1: 5000;  
Predicted band size: 17 kDa  
Observed band size: 17 kDa

#### Verified Activity:

2. Tissue/cell: human lung carcinoma; 4% Paraformaldehyde-fixed and paraffin-embedded;  
Antigen retrieval: citrate buffer (0.01M, pH6.0), Boiling bathing for 15 min; Block endogenous peroxidase by 3% Hydrogen peroxide for 30 min; Blocking buffer (normal goat serum) at 37°C for 20 min;  
Incubation: Anti-IL17E Polyclonal Antibody, Unconjugated (TMAB-00957) 1:200, overnight at 4°C, followed by conjugation to the secondary antibody and DAB staining.



Application:	IF, IHC-Fr, IHC-P, WB
Recommended	WB: 1:500-2000; IHC-P: 1:100-500; IHC-Fr: 1:100-500; IF: 1:100-500

## A DRUG SCREENING EXPERT

---

### Properties

Stability & Storage: Store at -20°C or -80°C for 12 months. Avoid repeated freeze-thaw cycles.

Shipping: Shipping with blue ice.

---

### Antigen Details

Immunogen: KLH conjugated synthetic peptide: human IL17E

Antigen Species: Human

Gene ID: 64806

Uniprot ID: Q9H293

Synonyms: interleukin-25;IL-25;Interleukin-17E;IL17E;IL-17E

Biology Area: Interleukins

---

### Research Background

The protein encoded by this gene is a cytokine that shares sequence similarity with interleukin 17. This cytokine can induce NF-kappaB activation, and stimulate the production of interleukin8. Both this cytokine and interleukin 17B are ligands for the cytokine receptor IL17BR. Studies of a similar gene in mice suggest that this cytokine may be a pro-inflammatory cytokine favoring the Th2-type immune response. Alternative splicing results in multiple transcript variants. [provided by RefSeq].

**Inhibitor · Natural Compounds · Compound Libraries · Recombinant Proteins**

This product is for Research Use Only · Not for Human or Veterinary or Therapeutic Use

Tel:781-999-4286 E\_mail:info@targetmol.com Address:34 Washington Street,Wellesley Hills,MA 02481