

## Anti-IL-1R1 Polyclonal Antibody

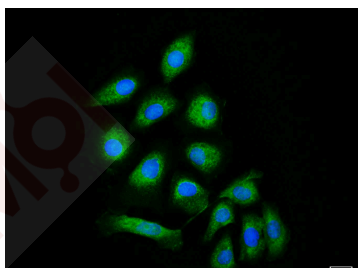
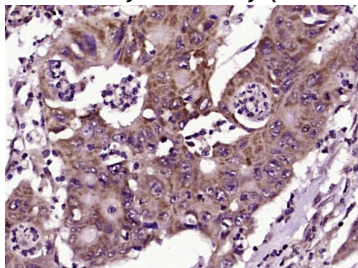
### Product Details

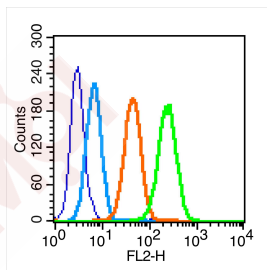
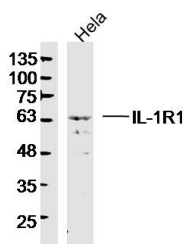
Ig Type:	IgG
Reactivity:	Human (predicted:Mouse,Dog,Pig)
Molecular Weight:	Theoretical: 63 kDa. Actual: 63 kDa.
Purification:	Protein A purified

### Applications

1. Paraformaldehyde-fixed, paraffin embedded (human colon carcinoma); Antigen retrieval by boiling in sodium citrate buffer (pH6.0) for 15 min; Block endogenous peroxidase by 3% hydrogen peroxide for 20 min; Blocking buffer (normal goat serum) at 37°C for 30 min; Antibody incubation with (IL-1R1) Polyclonal Antibody, Unconjugated (TMAB-00953) at 1:400 overnight at 4°C, followed by operating according to SP Kit (Rabbit) instructions and DAB staining.
2. HepG2 cell; 4% Paraformaldehyde-fixed; Triton X-100 at room temperature for 20 min; Blocking buffer (normal goat serum) at 37°C for 20 min; Antibody incubation with (IL-1R1) polyclonal Antibody, Unconjugated (TMAB-00953) 1:100, 90 minutes at 37°C; followed by a conjugated Goat Anti-Rabbit IgG antibody at 37°C for 90 minutes, DAPI (blue) was used to stain the cell nucleus.
3. Sample: HeLa (human) Cell Lysate at 40 µg  
Primary: Anti-IL-1R1 (TMAB-00953) at 1/300 dilution  
Secondary: IRDye800CW Goat Anti-Rabbit IgG at 1/20000 dilution  
Predicted band size: 63 kDa  
Observed band size: 63 kDa
4. Blank control (blue line): MCF7 (fixed with 70% methanol overnight at 4°C).  
Primary Antibody (green line): Rabbit Anti-IL-1R1 receptor antibody (TMAB-00953), Dilution: 0.2 µg/10<sup>6</sup> cells;  
Isotype Control Antibody (orange line): Rabbit IgG.  
Secondary Antibody (white blue line): Goat anti-rabbit IgG-PE, Dilution: 1 µg/test.

Verified Activity:





Application: FCM,ICC/IF,IF,IHC-Fr,IHC-P,WB

Recommended FCM=1 µg/Test; ICC/IF=1:100-500; IF=1:100-500; IHC-Fr=1:100-500; IHC-P=1:100-500; WB=1:500-2000

### Properties

Stability & Storage: Store at -20°C or -80°C for 12 months. Avoid repeated freeze-thaw cycles.

Shipping: Shipping with blue ice.

### Antigen Details

Immunogen: KLH conjugated synthetic peptide: human IL-1R1

Antigen Species: Human

Gene ID: 3554

Uniprot ID: P14778

Synonyms: interleukin 1 receptor, type I

Biology Area: Endothelial Cell Markers,Inflammatory mediators,Interleukins,T Lymphocytic Lineage,Dendritic Cell Lineage

### Research Background

The protein encoded by this gene is a cytokine receptor that belongs to the interleukin 1 receptor family. This protein is a receptor for interleukin alpha (IL1A), interleukin beta (IL1B), and interleukin 1 receptor, type I (IL1R1/IL1RA). It is an important mediator involved in many cytokine induced immune and inflammatory responses. This gene along with interleukin 1 receptor, type II (IL1R2), interleukin 1 receptor-like 2 (IL1RL2), and interleukin 1 receptor-like 1 (IL1RL1) form a cytokine receptor gene cluster in a region mapped to chromosome 2q12. [provided by RefSeq].

**Inhibitor · Natural Compounds · Compound Libraries · Recombinant Proteins**

This product is for Research Use Only · Not for Human or Veterinary or Therapeutic Use

Tel:781-999-4286 E\_mail:info@targetmol.com Address:34 Washington Street,Wellesley Hills,MA 02481