

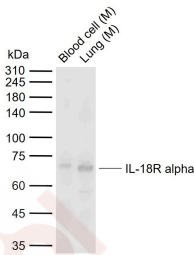
Anti-IL-18R alpha Polyclonal Antibody

Product Details

Ig Type:	IgG
Reactivity:	Human, Mouse (predicted: Rat, Dog, Pig, Cow)
Molecular Weight:	Theoretical: 60 kDa. Actual: 70 kDa.
Purification:	Protein A purified

Applications

Sample:	Lane 1: Mouse Blood cell lysates Lane 2: Mouse Lung tissue lysates
Verified Activity:	Primary: Anti-IL-18R alpha (TMAB-00952) at 1/500 dilution Secondary: IRDye800CW Goat Anti-Rabbit IgG at 1/20000 dilution Predicted band size: 60 kDa Observed band size: 70 kDa



Application:	WB
Recommended	WB: 1:500-2000

Properties

Stability & Storage:	Store at -20°C or -80°C for 12 months. Avoid repeated freeze-thaw cycles.
Shipping:	Shipping with blue ice.

Antigen Details

Immunogen:	KLH conjugated synthetic peptide: human IL-18R alpha
Antigen Species:	Human
Gene ID:	8809
Uniprot ID:	Q13478
Synonyms:	IL18RA; CDw218a; CD218a; interleukin 18 receptor 1; IL-1Rrp; IL1RRP

Research Background

The protein encoded by this gene is a cytokine receptor that belongs to the interleukin 1 receptor family. This receptor specifically binds interleukin 18 (IL18), and is essential for IL18 mediated signal transduction. IFN-alpha and IL12 are reported to induce the expression of this receptor in NK and T cells. This gene along with four other

A DRUG SCREENING EXPERT

members of the interleukin 1 receptor family, including IL1R2, IL1R1, ILRL2 (IL-1Rrp2), and IL1RL1 (T1/ST2), form a gene cluster on chromosome 2q. Alternatively spliced transcript variants encoding different isoforms have been found for this gene. [provided by RefSeq, Sep 2013]

Inhibitor · Natural Compounds · Compound Libraries · Recombinant Proteins

This product is for Research Use Only · Not for Human or Veterinary or Therapeutic Use

Tel:781-999-4286 E_mail:info@targetmol.com Address:34 Washington Street,Wellesley Hills,MA 02481