

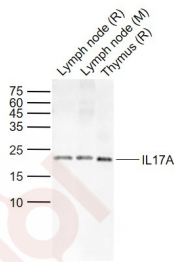
Anti-IL-17A Polyclonal Antibody 2

Product Details

Ig Type:	IgG
Reactivity:	Human (predicted:Mouse,Rat)
Molecular Weight:	Theoretical: 15 kDa.
Purification:	Protein A purified

Applications

Sample:	Lane 1: Rat Lymphnode tissue lysates Lane 2: Mouse Lymphnode tissue lysates Lane 3: Rat Thymus tissue lysates
Verified Activity:	Primary: Anti-IL17A (TMAB-00946) at 1/1000 dilution Secondary: IRDye800CW Goat Anti-Rabbit IgG at 1/20000 dilution Predicted band size: 15 kDa Observed band size: 22 kDa



Application:	IF,IHC-Fr,IHC-P
Recommended	IF=1:200-800; IHC-Fr=1:200-800; IHC-P=1:200-800

Properties

Stability & Storage:	Store at -20°C or -80°C for 12 months. Avoid repeated freeze-thaw cycles.
Shipping:	Shipping with blue ice.

Antigen Details

Immunogen:	KLH conjugated synthetic peptide: rat IL-17
Antigen Species:	Rat
Gene ID:	301289
Uniprot ID:	Q61453
Synonyms:	IL-17;CTLA8;IL-17A;IL17;CTLA-8;interleukin 17A
Biology Area:	Interleukins,Interleukins

Research Background

This gene is a member of the IL-17 receptor family which includes five members (IL-17RA-E) and the encoded

A DRUG SCREENING EXPERT

is a proinflammatory cytokine produced by activated T cells. IL-17A-mediated downstream pathways induce the production of inflammatory molecules, chemokines, antimicrobial peptides, and remodeling proteins. The encoded protein elicits crucial impacts on host defense, cell trafficking, immune modulation, and tissue repair, with a key role in the induction of innate immune defenses. This cytokine stimulates non-hematopoietic cells and promotes chemokine production thereby attracting myeloid cells to inflammatory sites. This cytokine also regulates the activities of NF-kappaB and mitogen-activated protein kinases and can stimulate the expression of IL6 and cyclooxygenase-2 (PTGS2/COX-2), as well as enhance the production of nitric oxide (NO). IL-17A plays a pivotal role in various infectious diseases, inflammatory and autoimmune disorders, and cancer. High levels of this cytokine are associated with several chronic inflammatory diseases including rheumatoid arthritis, psoriasis and multiple sclerosis. The lung damage induced by the severe acute respiratory syndrome coronavirus 2 (SARS-CoV-2) is to a large extent, a result of the inflammatory response promoted by cytokines such as IL17A. [provided by RefSeq, Sep 2020]

Inhibitor · Natural Compounds · Compound Libraries · Recombinant Proteins

This product is for Research Use Only · Not for Human or Veterinary or Therapeutic Use

Tel:781-999-4286 E_mail:info@targetmol.com Address:34 Washington Street,Wellesley Hills,MA 02481