

Anti-IL-15 Polyclonal Antibody

Product Details

Ig Type:	IgG
Reactivity:	Human, Mouse (predicted: Rat)
Molecular Weight:	Theoretical: 12.7 kDa.
Purification:	Protein A purified

Applications

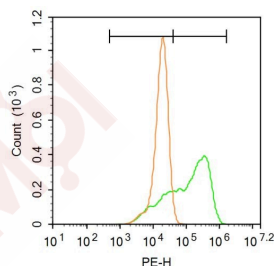
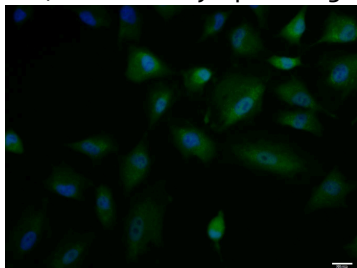
- A549 cell; 4% Paraformaldehyde-fixed; Triton X-100 at room temperature for 20 min; Blocking buffer (normal goat serum) at 37°C for 20 min; Antibody incubation with (IL-15) polyclonal Antibody, Unconjugated (TMAB-00944) 1:100, 90 minutes at 37°C; followed by a conjugated Goat Anti-Rabbit IgG antibody at 37°C for 90 minutes, DAPI (blue) was used to stain the cell nucleus.
- Blank control: A549. Primary Antibody (green line): Rabbit Anti-IL-15 antibody (TMAB-00944) Dilution: 1 µg/10⁶ cells; Isotype Control Antibody (orange line): Rabbit IgG. Secondary Antibody: Goat anti-rabbit IgG-PE Dilution: 3 µg/test.

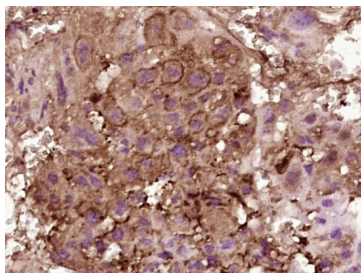
Verified Activity:

Protocol

The cells were fixed with 4% PFA (10 min at room temperature) and then permeabilized with 90% ice-cold methanol for 20 min at -20°C. The cells were then incubated in 5% BSA to block non-specific protein-protein interactions for 30 min at room temperature. Cells stained with Primary Antibody for 30 min at room temperature. The secondary antibody used for 40 min at room temperature.

3. Paraformaldehyde-fixed, paraffin embedded (Mouse placenta); Antigen retrieval by boiling in sodium citrate buffer (pH6.0) for 15 min; Block endogenous peroxidase by 3% hydrogen peroxide for 20 min; Blocking buffer (normal goat serum) at 37°C for 30 min; Antibody incubation with (IL-15) Polyclonal Antibody, Unconjugated (TMAB-00944) at 1:400 overnight at 4°C, followed by operating according to SP Kit (Rabbit) instructions and DAB staining.





Application: FCM,ICC/IF,IF,IHC-Fr,IHC-P

Recommended FCM=3 µg/Test; ICC/IF=1:100-500; IF=1:100-500; IHC-Fr=1:100-500; IHC-P=1:100-500

Properties

Stability & Storage: Store at -20°C or -80°C for 12 months. Avoid repeated freeze-thaw cycles.

Shipping: Shipping with blue ice.

Antigen Details

Immunogen: KLH conjugated synthetic peptide: human IL-15

Antigen Species: Human

Gene ID: 3600

Uniprot ID: P40933

Synonyms: IL-15;interleukin 15

Biology Area: Interleukins,Antiviral Signaling,Interleukins,NK Cells,Obesity

Research Background

IL15 (114 amino acids) is a cytokine that regulates T and natural killer cell activation and proliferation. It has a predicted molecular mass of approximately 12.5 kDa. Human IL15 shares approximately 97% and 73% amino acid sequence identity with simian and mouse IL15, respectively. Both human and simian IL15 are active on mouse cells. IL15 was initially isolated from the simian kidney epithelial cell line CV1/EBNA. It has also been isolated from mouse and human cell sources. The cytokines IL15 and IL2 share many biological properties and stimulatory activities (T, B, and NK cells). Both IL15 and IL2 stimulate mouse CTLL2 cells. In activated peripheral blood T lymphocytes, IL2 is highly expressed but the expression of IL15 is not detectable. There is no sequence homology between IL15 and IL2, though computer modeling indicates both possess a four alpha helical bundle structure. IL15 competes for binding sites with IL2, as both IL2 and IL15 stimulate the growth of cells through the IL2 receptor. IL15 mRNA is expressed in many cell types and tissues including adherent peripheral blood mononuclear cells, fibroblasts, and epithelial cells, monocytes, placenta, and skeletal muscle.

Inhibitor · Natural Compounds · Compound Libraries · Recombinant Proteins

This product is for Research Use Only · Not for Human or Veterinary or Therapeutic Use

Tel:781-999-4286 E_mail:info@targetmol.com Address:34 Washington Street,Wellesley Hills,MA 02481