

Anti-IL-11 Polyclonal Antibody

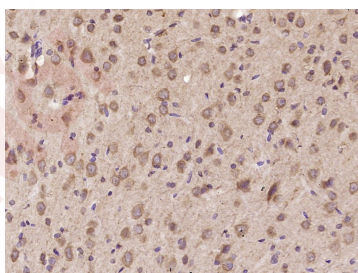
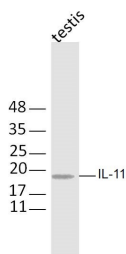
Product Details

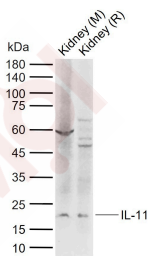
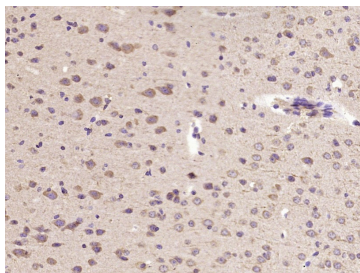
Ig Type:	IgG
Reactivity:	Mouse,Rat (predicted:Human,Dog,Pig,Cow,GuineaPig)
Molecular Weight:	Theoretical: 19 kDa. Actual: 19 kDa.
Purification:	Protein A purified

Applications

1. Sample: Testis (Mouse) Lysate at 30 µg
Primary: Anti-IL-11 (TMAB-00940) at 1/300 dilution
Secondary: IRDye800CW Goat Anti-Mouse IgG at 1/10000 dilution
Predicted band size: 19 kDa
Observed band size: 19 kDa
2. Paraformaldehyde-fixed, paraffin embedded (Rat brain); Antigen retrieval by microwave in sodium citrate buffer (pH6.0); Block endogenous peroxidase by 3% hydrogen peroxide for 30 minutes; Blocking buffer (3% BSA) at RT for 30 min; Antibody incubation with (IL-11) Polyclonal Antibody, Unconjugated (TMAB-00940) at 1:400 overnight at 4°C, followed by conjugation to the secondary antibody (labeled with HRP) and DAB staining.
3. Paraformaldehyde-fixed, paraffin embedded (Mouse brain); Antigen retrieval by microwave in sodium citrate buffer (pH6.0); Block endogenous peroxidase by 3% hydrogen peroxide for 30 minutes; Blocking buffer (3% BSA) at RT for 30 min; Antibody incubation with (IL-11) Polyclonal Antibody, Unconjugated (TMAB-00940) at 1:400 overnight at 4°C, followed by conjugation to the secondary antibody (labeled with HRP) and DAB staining.
4. Sample:
Lane 1: Mouse Kidney tissue lysates
Lane 2: Rat Kidney tissue lysates
Primary: Anti-IL-11 (TMAB-00940) at 1/500 dilution
Secondary: IRDye800CW Goat Anti-Rabbit IgG at 1/20000 dilution
Predicted band size: 19 kDa
Observed band size: 19 kDa

Verified Activity:





Application: IF,IHC-Fr,IHC-P,WB

Recommended WB: 1:500-2000; IHC-P: 1:100-500; IHC-Fr: 1:100-500; IF: 1:100-500

Properties

Stability & Storage: Store at -20°C or -80°C for 12 months. Avoid repeated freeze-thaw cycles.

Shipping: Shipping with blue ice.

Antigen Details

Immunogen: KLH conjugated synthetic peptide: human IL-11

Antigen Species: Human

Gene ID: 3589

Uniprot ID: P20809

Synonyms: interleukin 11

Biology Area: Interleukins,Interleukin,Non-CD,Interleukins,Other secreted molecules,Thrombocytic Lineage

Research Background

Interleukin 11 is a pleiotropic cytokine produced by mesenchymal-derived adherent cells. IL11 shares many functions of IL6 and LIF, including potentiation of megakaryocyte activity, enhancement of human myeloma cell proliferation, and enhancement of hepatic acute phase protein production. Interleukin 11 directly stimulates the proliferation of hematopoietic stem cells and megakaryocyte progenitor cells, and induces megakaryocyte maturation resulting in increased platelet production. Clinically it is used to prevent severe thrombocytopenia and the reduction of the need for platelet transfusion following myelosuppressive chemotherapy.

Inhibitor · Natural Compounds · Compound Libraries · Recombinant Proteins

This product is for Research Use Only · Not for Human or Veterinary or Therapeutic Use

Tel:781-999-4286 E_mail:info@targetmol.com Address:34 Washington Street,Wellesley Hills,MA 02481