

Anti-IL-10 Polyclonal Antibody 2

Product Details

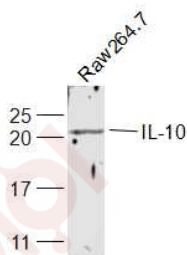
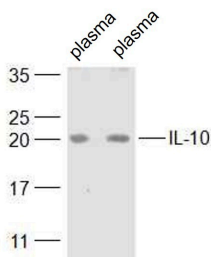
Ig Type: IgG
Reactivity: Human(predicted:Mouse,Rat)
Molecular Weight: Theoretical: 20 kDa. Actual: 17 kDa.
Purification: Protein A purified

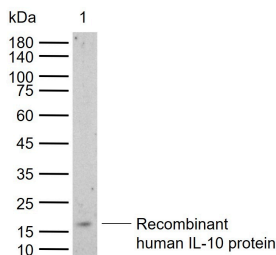
Applications

1. Sample:
Plasma (Rat) at 40 µg
Plasma (Rat) at 40 µg
Primary: Anti-IL-10 (TMAB-00937) at 1/1000 dilution
Secondary: IRDye800CW Goat Anti-Rabbit IgG at 1/20000 dilution
Predicted band size: 20 kDa
Observed band size: 20 kDa

2. Sample:
Raw264.7 (Mouse) Lysate at 30 µg
Verified Activity: Primary: Anti-IL-10 (TMAB-00937) at 1/1000 dilution
Secondary: IRDye800CW Goat Anti-Rabbit IgG at 1/20000 dilution
Predicted band size: 20 kDa
Observed band size: 20 kDa

3. Sample:
Lane 1: Recombinant human IL-10 protein, His (HEK293)
Primary: Anti-IL-10 (TMAB-00937) at 1/1000 dilution
Secondary: IRDye800CW Goat Anti-Rabbit IgG at 1/20000 dilution
Predicted band size: 20 kDa
Observed band size: 17 kDa





Application: WB

Recommended WB: 1:500-2000

Properties

Stability & Storage: Store at -20°C or -80°C for 12 months. Avoid repeated freeze-thaw cycles.

Shipping: Shipping with blue ice.

Antigen Details

Immunogen: KLH conjugated synthetic peptide: human IL-10

Antigen Species: Human

Gene ID: 3586

Uniprot ID: P22301

Synonyms: interleukin 10;IL-10;CSIF

Biology Area: Interleukins,Regulatory T Cells,Interleukins

Research Background

The protein encoded by this gene is a cytokine produced primarily by monocytes and to a lesser extent by lymphocytes. This cytokine has pleiotropic effects in immunoregulation and inflammation. It down-regulates the expression of Th1 cytokines, MHC class II Ags, and costimulatory molecules on macrophages. It also enhances B cell survival, proliferation, and antibody production. This cytokine can block NF-kappa B activity, and is involved in the regulation of the JAK-STAT signaling pathway. Knockout studies in mice suggested the function of this cytokine as an essential immunoregulator in the intestinal tract. Mutations in this gene are associated with an increased susceptibility to HIV-1 infection and rheumatoid arthritis. [provided by RefSeq, May 2020]

Inhibitor · Natural Compounds · Compound Libraries · Recombinant Proteins

This product is for Research Use Only · Not for Human or Veterinary or Therapeutic Use

Tel:781-999-4286 E_mail:info@targetmol.com Address:34 Washington Street,Wellesley Hills,MA 02481
