

## Anti-IL-1 beta Antibody (1F906)

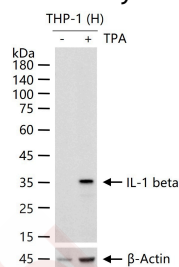
## Product Details

Ig Type:	IgG
Reactivity:	Human
Molecular Weight:	Theoretical: 31 kDa. Actual: 35 kDa.
Clone:	1F906
Purification:	Protein A purified

## Applications

## Verified Activity:

THP-1 (H) cells were treated with or without TPA (80nM) for 24h, then treated with (100ng/ml) lipopolysaccharide (LPS) for 6h, then with (300ng/ml) Brefeldin A added after 3h, 25 µg total protein per Lane of cell lysates probed with IL-1 beta monoclonal antibody, unconjugated (TMAB-00935) at 1:1000 dilution and 4°C overnight incubation. Followed by conjugated secondary antibody incubation at RT for 60 min.



Application:	WB
Recommended	WB=1:1000-5000

## Properties

Stability & Storage:	Store at -20°C or -80°C for 12 months. Avoid repeated freeze-thaw cycles.
Shipping:	Shipping with blue ice.

## Antigen Details

Immunogen:	A synthesized peptide: human IL 1 beta
Antigen Species:	Human
Gene ID:	3553
Uniprot ID:	P01584
Biology Area:	Inflammatory mediators, Interleukins, Obesity, SARS Coronavirus

## Research Background

The protein encoded by this gene is a member of the interleukin 1 cytokine family. This cytokine is produced by activated macrophages as a proprotein, which is proteolytically processed to its active form by caspase 1 (CASP1/ICE). This cytokine is an important mediator of the inflammatory response, and is involved in a variety of cellular activities, including cell proliferation, differentiation, and apoptosis. The induction of cyclooxygenase-2

## A DRUG SCREENING EXPERT

---

(PTGS2/COX2) by this cytokine in the central nervous system (CNS) is found to contribute to inflammatory pain hypersensitivity. This gene and eight other interleukin 1 family genes form a cytokine gene cluster on chromosome 2. [provided by RefSeq, Jul 2008].

**Inhibitor · Natural Compounds · Compound Libraries · Recombinant Proteins**

This product is for Research Use Only · Not for Human or Veterinary or Therapeutic Use

Tel:781-999-4286 E\_mail:info@targetmol.com Address:34 Washington Street,Wellesley Hills,MA 02481